

Butler ESU

Donald J. Trump

Detail

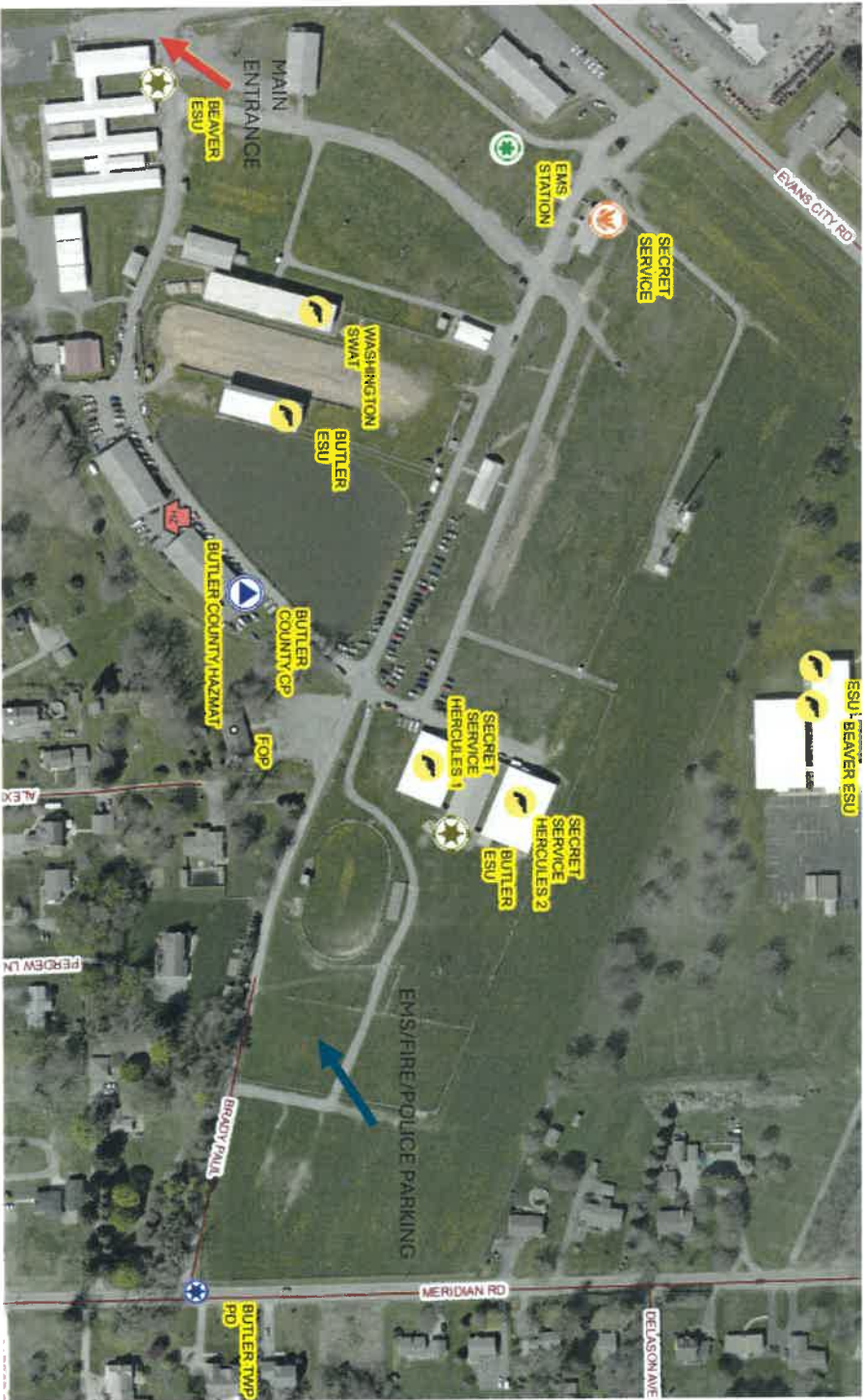
Location:

625 Evans City Rd. Butler, PA 16001

Municipality: Connoquenessing Twp/Butler Twp.

Date: 13 July 2024, 0900 hours

AREA OF OPERATION



SITUATION

Republican Candidate/Former President Donald J. Trump is making a campaign visit at the Butler Farm Show Grounds, 625 Evans City Road on July 13th at approximately 1620hrs.

MISSION

The Butler County ESU is tasked with the following

- 1.) Two Counter Assault Teams
- 2.) QRF Teams
- 3.) Counter Sniper Teams

Execution

Team 400 will rally at the Farm Show Grounds, Brady Paul Lane at 0900hrs.

Team 400 will be assisted by elements from Beaver County ESU and Washington County SWAT

Operation Plan Brief will begin at 0915hrs. Once completed Elements will move to their Farm Show Locations.

Execution

TIMELINE OF EVENTS

- 0915hrs : Operational Brief at Brady Paul Lodge
- 1100hrs:
 - Command Post operational
 - Sniper Positions occupied
 - Counter Assault Teams in positions
 - Quick Response Force in position
- 1300: Gates Open to public
- 1505: Candidate arrival at Airport (PIT)
- 1620: Motorcade Asset arrival to Farm Show
- 1700-1815: Speech (75 minutes)
- 1815: Motorcade Departure
- 1815 (Tentative): Upon departure of motorcade Sniper assets can exfil. CAT Teams can stand down. All assets reposition to Sector 2, near Brady Paul Lodge for operational hotwash / debrief.
- Accountability Check – when all personnel are accounted for assets will be released – Beaver and Washington released first, and as soon as possible.

Execution

Location Butler County ESU Counter Assault Team and QRF Team



Execution

- Location Beaver County ESU Counter Assault Team(Entrance to event)



EXECUTION

Butler ESU Counter Assault Team(6 Operators)- Dedicated members to respond to a coordinated attack on Trump and/or location of event.

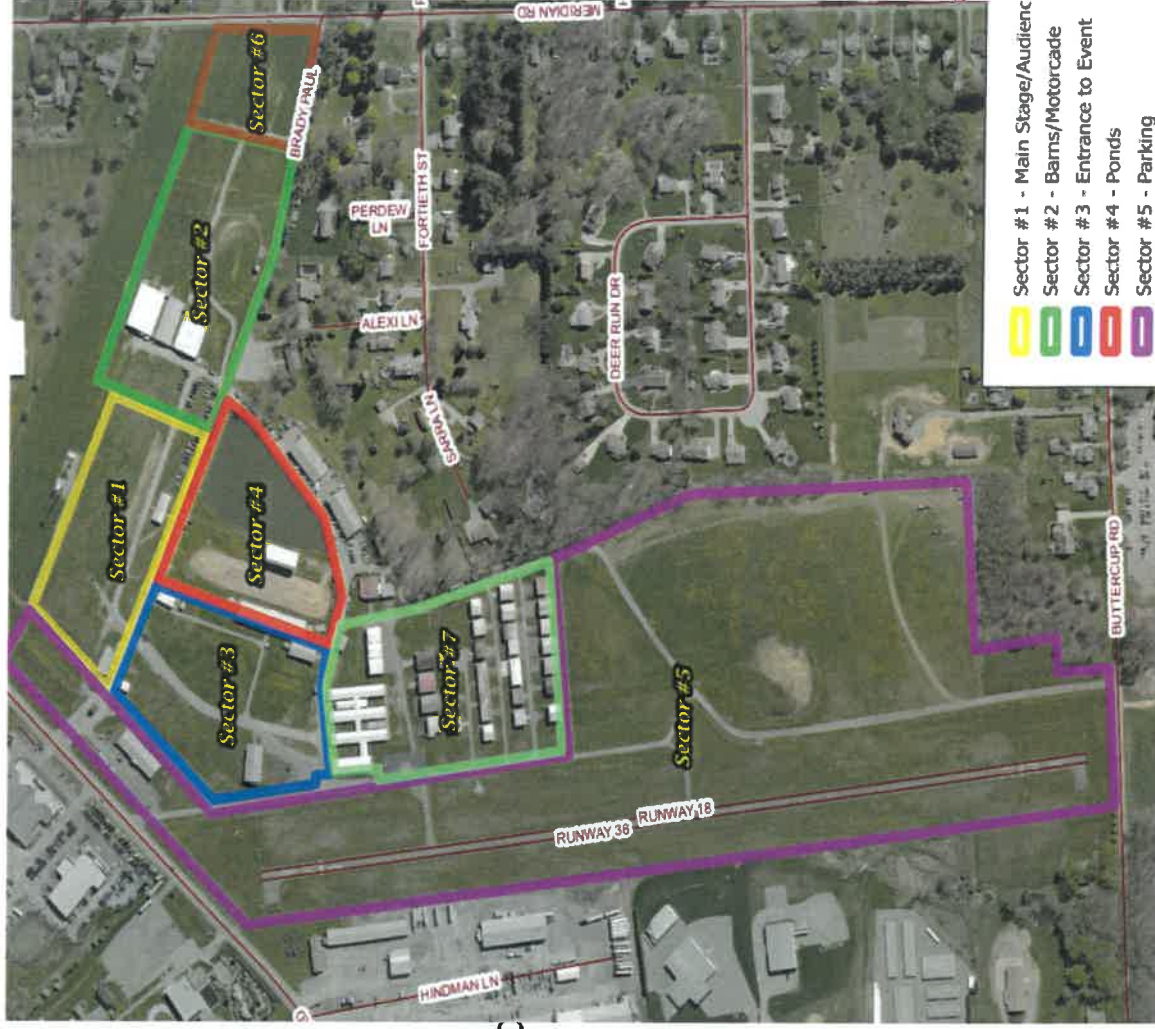
Beaver County ESU Counter Assault Team(6 Operators)- Dedicated members to respond to a coordinated attack on Trump and/or location of event.

Execution

- QRF TEAM(4 to 6 Operators)-Responsible for a lone Active Attack/Shooter on/off site.
- Members are to report all sightings of Drones to CP. Members may be requested to assist in recovery of said drones
 - QRF or UTV (counterassault teams are dedicated and will not deviate from their mission)

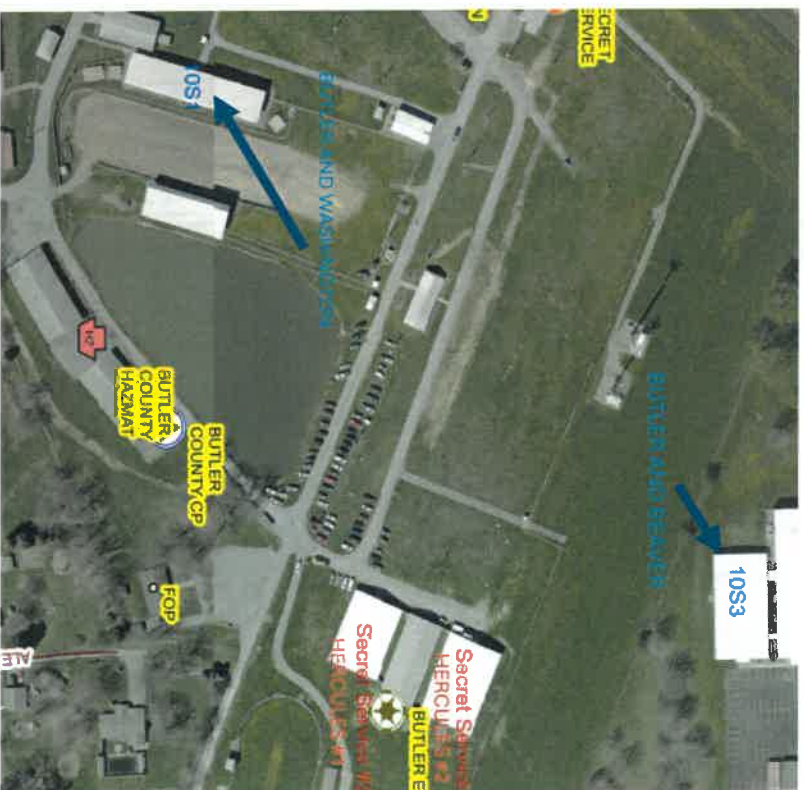
Execution

- Sectors-Order Per Importance
Sector #1-Main Stage/Audience
Sector #2-Cow Barns/Trump Motorcade
Sector #3-Entrance to Event
Sector #4-Pond
Sector #5-Parking Lot
Sector #6-EMS/FIRE/POLICE Parking
Sector #7 Dairy Barns/Hangers



Execution

- Sniper Elements
- Butler/Beaver/Washington
- Grandstand Location(10S1)
- AGR Location(10S3)
- Secret Service
- Barn Roof Top Behind Main Stage
- Hercules Call signs



Administration and Logistics

Beaver County ESU Assistance

BEARCAT

Counter Assault Team

Sniper Team(2)

Washington Regional Swat
Assistance

Counter Assault Team

Sniper Team

Administration and Logistics

- Vehicles

AR400	SQ400	SQ200	UTV
Drivers Beachem	Matthews	McDonald	Zal

SQ400 AND SQ200 will be brought to the scene by Zip and Nico

Administration and Logistics

Radios

- Sniper Team's will be issued a Butler County Radio. (Documented who has)
- TL's of Beaver Co will be issued the same (Documented who has)
- Provided by COUNTY EMA

Radio Procedures

- When calling CP use County Code prior to your call sign
Example "10 BRAVO 1" or "10 Sierra 2"

COUNTY CODES

Beaver-4

Butler-10

Washington-63

Administration and Logistics

- Equipment for Operators
 - Shotguns x 2 beanbags for LL- Issued to one member of each QRF and Counter Assault Team
 - 40mm Single Launchers X 2- Issued to one member of each QRF and Counter Assault Team
 - Taser-Issued out to at least one member of each QRF and Counter Assault Team
 - Pepperball- Issued to member of QRF Team and Counter Assault Team
 - Smoke/flashbang/OC/CS vapor-Issued to one member of each QRF and Counter Assault Team

Command and Control

- Frequency: Butler Police OPS 4
(encrypted)
- Overall Command-LT Harold PSP
- Butler Twp-Lt Pearson-1302
Sgt Vensel-1305
Sgt Murphy-1303
- Team 400 Command: LENZ C-1
- Tac Op. Command: Mikulan C2
- Crawford C-3
- Zaliponi A-1
- Schaffner B-1
- Medical Plan:
 - Medic with each team
 - Nico with CAT
 - Jurysta with QRF
 - Additional with SQ200
 - EMS – AHN EMS will have ALS ambulance and an EMS physician dedicated to LE
 - AHN Assets staged in Sector #2
 - Primary medical facility: BMH
MD CMD: 724-284-4599
 - Closest LZ: Field Meridian Road
 - Life Flight: 412-359-3333

Personnel

COUNTER ASSAULT AR400

Mikulan
Schaffner
Fleming
Niederlander
Oesterling
May
Nico

QRF Team UTV/SQ400

Sulerud
Kopas
Slack
Sneddon
Jurysta
Setnar

Personnel

COUNTER ASSAULT #2

Beaver ESU Bearcat

Shane

O'Sche

Bitts

Priolo (until 1600)

Nicol, M (TEMS)

Shaffer M

Shaffer B

Huminsky

McCarthy

Short

SNIPER ELEMENTS

Butler ESU:

Beaver ESU:

Washington SWAT:

Personnel

ASSIGNMENT LIST (ICS 204)

1. Incident Name: Presidential Rally - Butler Farm Show		2. Operational Period: Date From: 7/13/2024 Time From: 0900		Date To: 7/13/2024 Time To: 1900	
4. Operations Personnel: Name Operations Section Chief: <u>Butler ESU - Commander - E Lenz</u> Branch Director: _____ Division/Group Supervisor: _____		Contact Number(s)		3. Branch: Division: Group: Staging Area:	
5. Resources Assigned:					
Resource Identifier	Leader	# of Resources	Contact (e.g., phone, pager, radio frequency, etc.)	Reporting Location, Special Equipment and Supplies, Remarks, Notes, Information	
CAT #1	Schaffner 10B1	6	Radio / Cell # 724-355-1994		
CAT #2	Shane	6	Radio / Cell # 724-709-5777		
QRF	Sulerud 10A1		Radio / Cell # 724-986-9447		
Tac Command	Lenz 10C1		Radio / Cell # 412-841-6956		
Tac Ops / CAT Liason	Mikulian 10C2		Radio / Cell # 412-316-6716		
Tac Ops	Crawford		Radio / Cell # 724-679-9483		
SS Countersniper	Marciniak		Radio / Cell # 202-713-6906		
SS - Lead	Bank		Cell # 202-441-2873		
SS CAT	Box		Cell # 615-483-7617		
TEMS Ops	Soler 10R1		Radio / Cell # 724-290-4264		

Personnel

COMMUNICATIONS LIST (ICS 205A)

1. Incident Name: Presidential Rally - Butler Farm Show		2. Operational Period: Date From: 7/13/2024 Time From: 0900		Date To: 7/13/2024 Time To: 1900	
3. Basic Local Communications Information:					
Incident Assigned Position	Name (Alphabetized)	Method(s) of Contact (phone, pager, cell etc.)			
Butler ESU	Beechem, Joe	10B31 / Cell 724-553-8978			
Beaver ESU	Blits, Alex				
Butler ESU	Crewford, Denny	10C3 / Cell 724-679-9483			
Butler ESU	Fleming, Kory	10B2 / Cell 780-859-6558			
Washington Regional SWAT	Huminaky, Ben	Cell / 972-345-4288			
Butler ESU	Juryista, Jon	10R65 / Cell 724-831-6642			
Butler ESU	Kopas, Chris	10A12 / Cell 724-504-7384			
Washington Regional SWAT	Kuzak, Guy	Kuzak / Cell 412-960-9161			
Butler ESU	Lenz, Edward	10C1 / Cell 412-841-6956			
Butler ESU	Mathews, Alyssa	10N50 / Cell 724-581-0123			
Butler ESU	May, Jacob	10B27 / Cell 404-345-7868			
Butler ESU	Mayhugh, Bill	1506 / Cell 724-882-0077			
Washington Regional SWAT	McCarthy, Tom				
Butler ESU	McDonald, Ray	10R69 / Cell 724-831-1730			
Butler ESU	Mikulan, Kevin	10C2 / Cell 412-316-6716			
Butler ESU	Murcko, Mike	10S3 / Cell 412-612-7070			
Butler ESU	Niederlander, Andrew	10B19 / Cell 724-996-2395			
Beaver ESU	Nichol, Greg				
Beaver ESU	Nichol, Mike				
Beaver ESU	O'Sche, Joe				
Butler ESU	Oesterling, Nate	10A22 / Cell 724-996-0627			
Beaver ESU	Prilo, Mike				
Butler ESU	Renaud, Christian	10N55 / Cell 724-584-7297			
Butler ESU	Scheffner, Jon	10B1			
Butler ESU	Seinar, Matt	10A14 / Cell 412-216-1084			
Washington Regional SWAT	Shaffer, Matt				
Washington Regional SWAT	Shaffer, Ben				
Beaver ESU	Shene, Tom	Cell 724-708-5777			
Washington Regional SWAT	Short, Pat				
Butler ESU	Slack, Ryan	10A28 / Cell 724-575-2560			
Butler ESU	Sneddon, Jeff	10B25 / Cell 724-504-2972			
Butler ESU	Solar, Nico	10R1 / Cell 724-290-4284			
Butler ESU	Sulerud, Mike	10A2 / Cell 724-986-9447			
Butler ESU	Wagner, Matt	10S1 / Cell 724-355-0884			

Personnel

COMMUNICATIONS LIST (ICS 205A)

1. Incident Name:		2. Operational Period:	
Presidential Rally - Butler Farm Show		Date From: 7/13/2024	Date To: 7/13/2024
		Time From: 0900	Time To: 1900
3. Basic Local Communications Information:			
Incident Assigned Position	Name (Alphabetized)	Method(s) of Contact (phone, pager, cell, etc.)	
Butler ESU	Wilson, Bill	10A20 / Cell 412-445-2993	
Beaver ESU	Woods, Jason		
Butler ESU	Zaliponi, Aaron	10A1 / Cell 724-841-4729	
Secret Service - Counter Sniper		Hercules 1	
Secret Service - Counter Sniper		Hercules 2	
Lead / Transportation	SA Meredith Bank	Cell 202-441-2873	
Farm Show Site	SA Myosoty Perez	Cell 202-763-3238	
Farm Show Site	SA Dana Dubrey	Cell 202-253-6866	
Intelligence	SA Chase Clowser	Cell 202-384-4582	
Technical Security Lead	TSI John Edwards	Cell 202-536-7350	
Counter UAS	SA Eduardo Castro	Cell 702-236-0642	
Field Office Supervisor	SAIC Tim Burkert	Cell 202-538-9647	
Farm Show Supervisor	ATSAIC Brian Pardini	Cell 202-420-1379	



CONTINGENCIES

Attack on Event(Multiple Actors)

Assault on Former President Trump

Single Active Attack/Event

Contingencies

- Attack on Event Multiple Actors

Butler ESU Counter Assault Team Responsibility

Farm Show Main Entrance(Sector #1)

Farm Show Rear Entrance(Sector #6)

Stage(Sector #1)

All Sector #1/#2/#4/#6

Response will be quick and direct to the threat to neutralize said threat.

Contingencies

- Attack on Event Multiple Actors
Beaver Co ESU Counter Assault Team Responsibility
Main Entrance to Event(Sector #3)
Sector #3/#5/#7

Response will be quick and direct to the threat to neutralize said threat.

Each Counter Assault Team(Beaver / Butler) will be hold their area of responsibility. This is to ensure there can be a response to a secondary attack.

Contingencies

Assault on Former President Trump

*Secret Service Counter Assault Team will handle evac

Butler County ESU Counter Assault Team Responsibility

Beaver County Counter Assault Team will assist

Butler County ESU QRF will be in Reserve to respond to an additional attack

Response will be quick and direct to the threat to neutralize said threat.

Contingencies

Single Active Attack/Event

**Butler County ESU QRF Team will respond and handle incident.
Inside perimeter will use UTV. Outside perimeter SQ400 or
Mayhugh's County Vehicle**

DEPLOYMENT OF CHEMICAL MUNITIONS

All deployment of Chemical Munitions must be approved by
Command(Lenz)

Civil disturbance will be handled by uniformed members of PSP. If requested by PSP Incident Commander, the QRF may respond to deploy chemical munitions with approval of ESU command.

LRAD Use will be limited to notification announcements only.

POST OPERATION

Once Former President Trump is off site, Butler County ESU will remain on site to handle any tactical incidents. Beaver County can stand down. Once PSP/BTPD gives all clear Butler County ESU will stand down.

BUTLER COUNTY ESU Members can respond to GARAGE to assist in putting gear away.



Use of Force

The Butler County ESU recognizes and respects the value and special integrity of each human life. In vesting Police Officers with the lawful authority to use force to protect themselves and the public welfare, a careful balancing of all human interests is required. It is the policy of Butler County ESU that police officers shall use only that force that is objectively reasonable under all circumstances known to the officer at the time to effectively bring an incident under control, while protecting property and the lives of the officer and others. Use of force, as designated herein, shall be reported in a timely, complete, and accurate manner by involved officers and in accordance with the policy.



LEVEL OF FORCE

- 1) Members shall use only the amount of force, which is reasonable to affect an arrest, to prevent an escape, in self-defense, and to protect another person (other officer or citizen).
No officer will use unreasonable or excessive force toward any person, nor shall they under respond and risk injury to themselves or others.
- 2) The following will be considered in determining the reasonableness of the force to be used:
 - a) Severity of offense suspected
 - b) Did suspect pose an immediate threat to the officer or others
 - c) Is the suspect actively resisting or attempting to escape



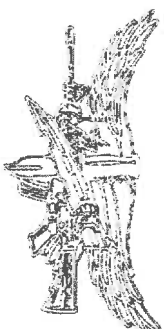
DEADLY FORCE

- 1) When it is necessary for an officer to intentionally use a firearm or other instrument, the member shall exercise the utmost caution to avoid endangering innocent persons.
- 2) All uses of Deadly Force must be objectively reasonable based upon the totality of circumstances surrounding its use.



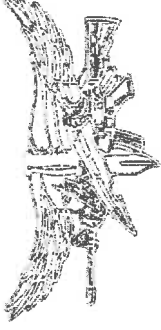
PARAMETERS FOR USE OF LESS LETHAL FORCE

- 1) Where deadly force is not authorized, officers shall use only that level of force that the officer perceives as objectively reasonable under the circumstances consistent with the level of resistance encountered.
- 2) Officers are authorized to use approved less lethal force techniques and issued equipment for resolution of incidents as follows: to affect an arrest, to prevent an escape, in self defense, and to protect another person. Additionally, officers may encounter non-arrest situations requiring them to:
 - a) Protect themselves or another from physical harm;
 - b) Restrain or subdue a resistant individual; or
 - c) Bring an unlawful situation safely and effectively under control.



USE OF CONTROL DEVICES

- 1) Control devices described in this policy (OC, Impact Munitions, Pepperball) may be carried and used by members of the Butler County ESU only if the device has been issued by or approved by the ESU Commander.
- 2) Only those members who have successfully completed approved training in the use of any control device are authorized to carry and use the device.
- 3) Control devices may be used when a decision has been made to control, restrain or arrest a person who is violent or who demonstrates the intent to be violent and the use of the device appears reasonable under the circumstances. When reasonable, a verbal warning and opportunity to comply should precede the use of these devices.
- 4) The use of control devices is considered non-deadly use of force, which is not intended to cause death or serious physical injury.



USE OF CONTROL DEVICES (Continued)

- 5) Control Devices should not be used should not be used on the following individuals, except in circumstances where the safety of officers or the public outweighs the potential health risk to the suspect:
 - a) Children
 - b) Elderly persons
 - c) Females known or appear to be pregnant

- 6) In addition to the above, OC / PepperBall should not be used on the following individuals, except in circumstances where the safety of officers or the public outweighs the potential health risk to the suspect:
 - a) Persons with known respiratory ailments
 - b) Persons with known heart related ailments



KINETIC ENERGY AND IMPACT MUNITIONS:

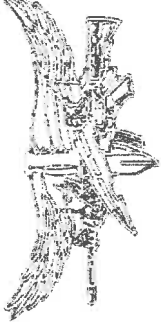
1) Butler County ESU is committed to reducing the potential for violent confrontations. Kinetic energy projectiles, when used properly, are less likely to result in death or serious physical injury and can be used to attempt to de-escalate a potentially deadly situation.

2) Deployment and Use

a) Only approved kinetic energy munitions shall be carried and deployed. Approved weapon systems include 37MM/40MM launcher, shotgun, and the pepper ball launcher. Approved munitions may be used to compel an individual to cease his/her actions when such munitions present a reasonable option.

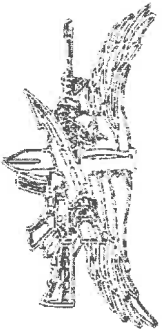
b) Officers are not required or compelled to use approved munitions in lieu of other reasonable tactics if the involved officer determines that deployment of these munitions cannot be done safely.

The safety of hostages, innocent persons and officers takes priority over the safety of individuals engaged in criminal or suicidal behavior



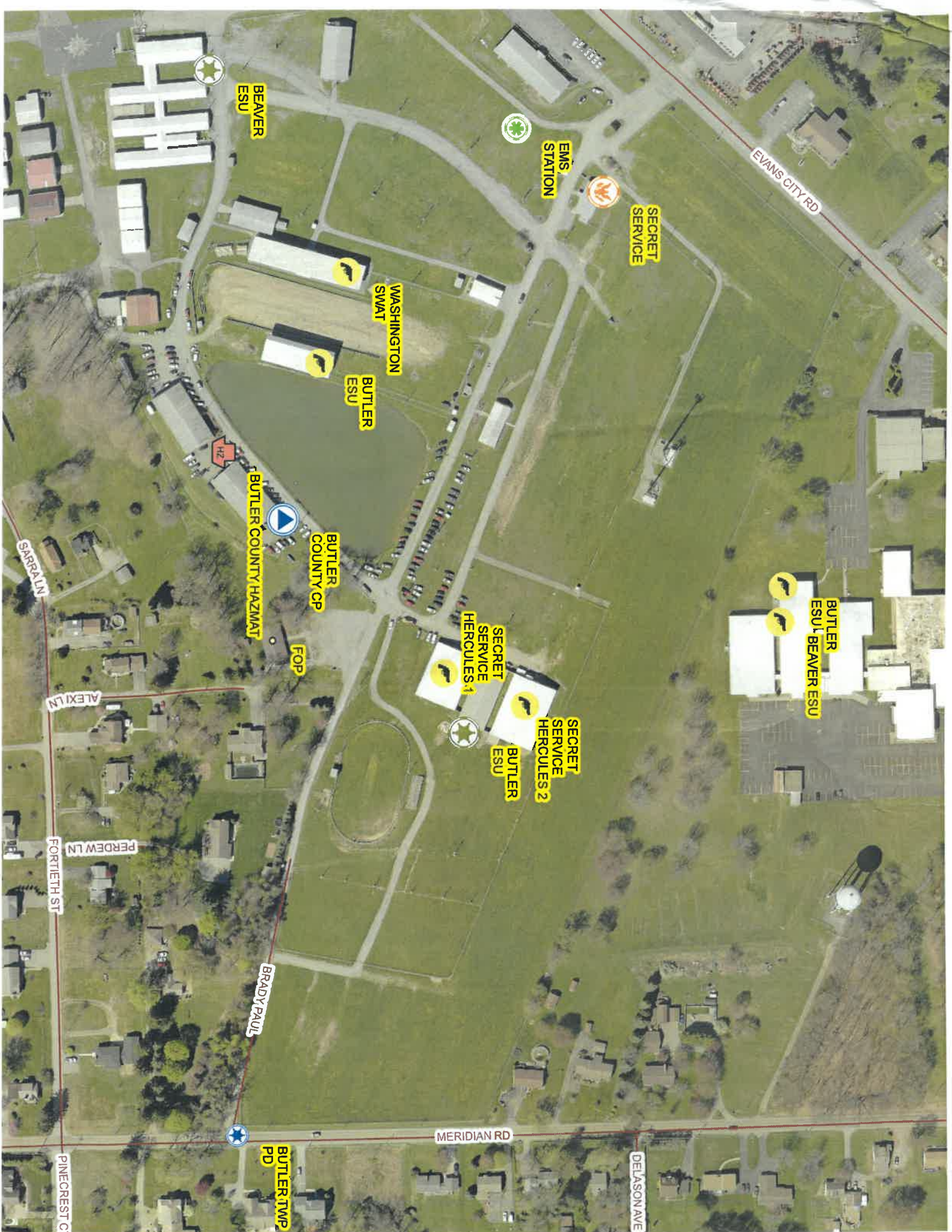
KINETIC ENERGY AND IMPACT MUNITIONS (Continued)

- c) Circumstances appropriate for deployment include, but are not limited to, situations in which:
- i. The suspect is armed with a weapon and the tactical circumstances allow for the safe application of approved munitions.
 - ii. The suspect has made credible threats to harm him/herself or others.
 - iii. The suspect is engaged in riotous behavior or is throwing rocks, bottles or other dangerous projectiles at officers, other department members and/or other people.
 - iv. There is probable cause to believe that the suspect has already committed a crime of violence and is refusing to comply with lawful orders.



SMOKE GRENADES

- 1) Accepted Uses:
 - a) To provide a visual concealment/distraction during man-down rescue efforts.
 - b) As a distraction during a “rouse.”
 - c) To signal rescue personnel or aircraft during wilderness emergencies.



BEAVER
ESU

EMS
STATION

SECRET
SERVICE

WASHINGTON
SWAT

BUTLER
ESU

BUTLER COUNTY
HAZMAT

BUTLER
COUNTY CP

FOP

SECRET
SERVICE
HERCULES 1

SECRET
SERVICE
HERCULES 2

BUTLER
ESU

BUTLER
ESU
BEAVER ESU

BUTLER TWP
PD

MERIDIAN RD

DELAISON AVE

PERDEW LN

ALEXI LN

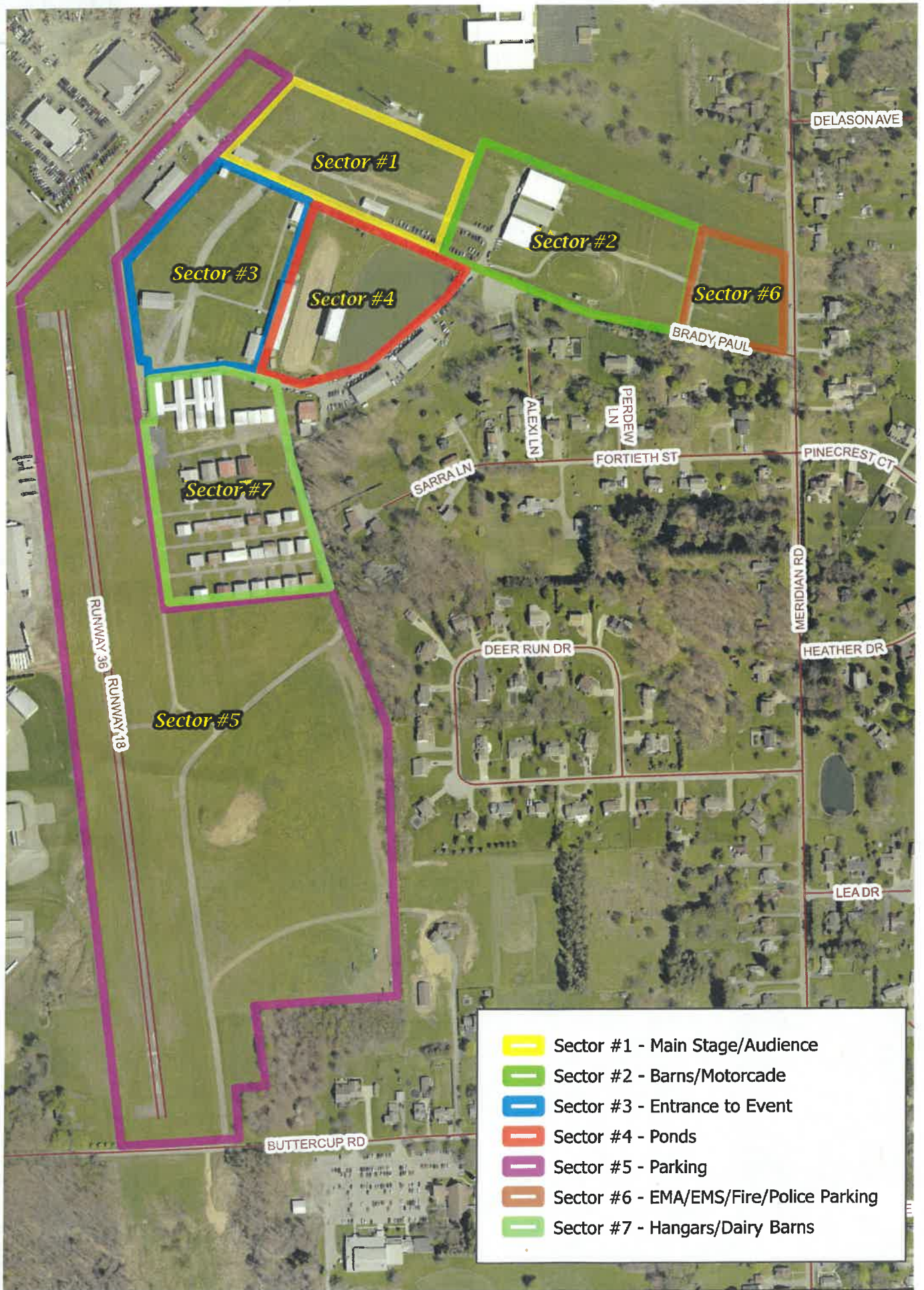
SARA LN

PINECREST CT

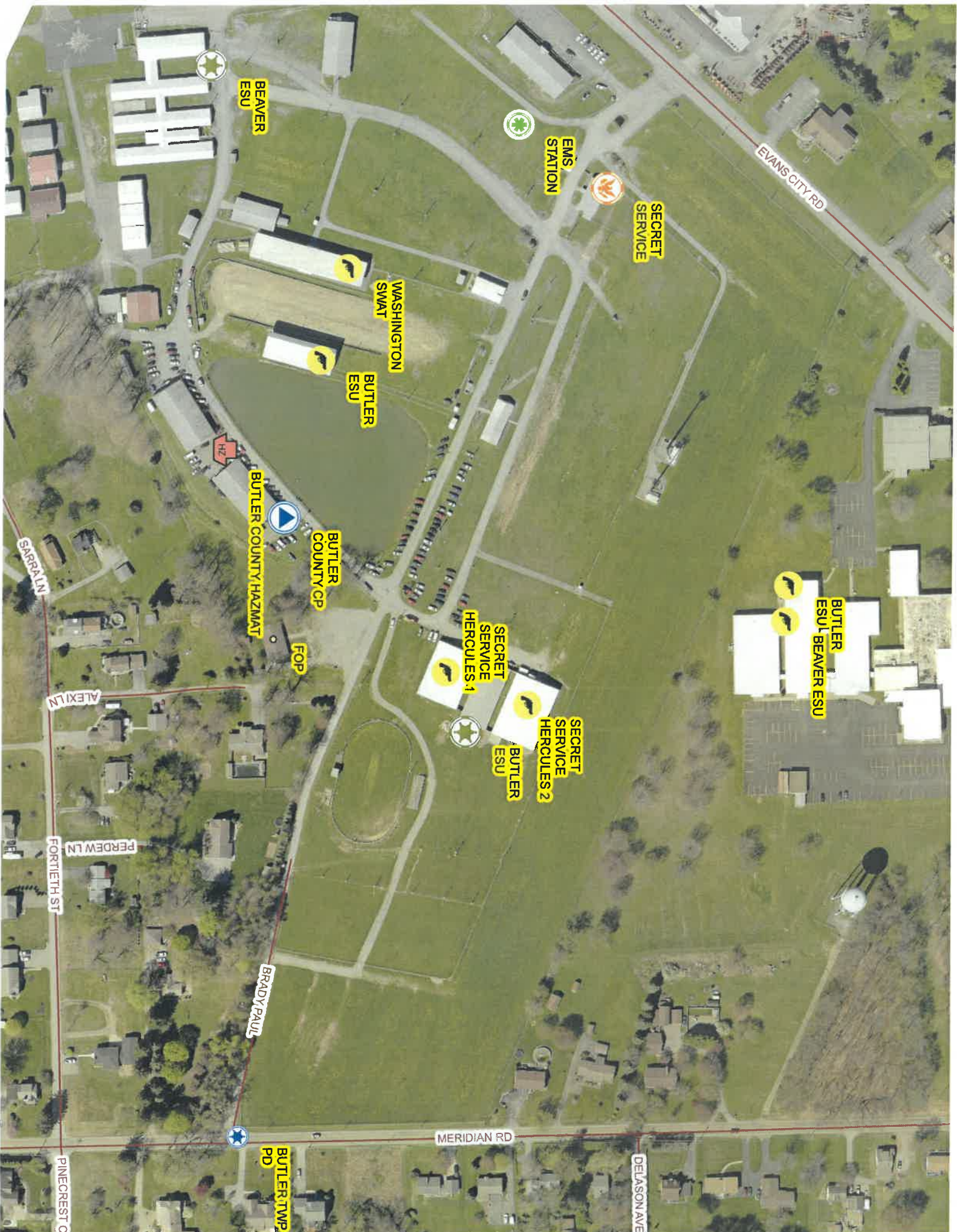
BRADY PAUL

FORTIETH ST

EVANS CITY RD



- Sector #1 - Main Stage/Audience
- Sector #2 - Barns/Motorcade
- Sector #3 - Entrance to Event
- Sector #4 - Ponds
- Sector #5 - Parking
- Sector #6 - EMA/EMS/Fire/Police Parking
- Sector #7 - Hangars/Dairy Barns



BEAVER
ESU

EMS
STATION

SECRET
SERVICE

WASHINGTON
SWAT

BUTLER
ESU

BUTLER COUNTY HAZMAT

BUTLER
COUNTY CP

FOP

SECRET
SERVICE
HERCULES 1

BUTLER
ESU

SECRET
SERVICE
HERCULES 2

BUTLER
ESU

BUTLER
ESU/ BEAVER ESU

BRADY PAUL

MERIDIAN RD

DELASON AVE

BUTLER TWP
PD

PINECREST CT

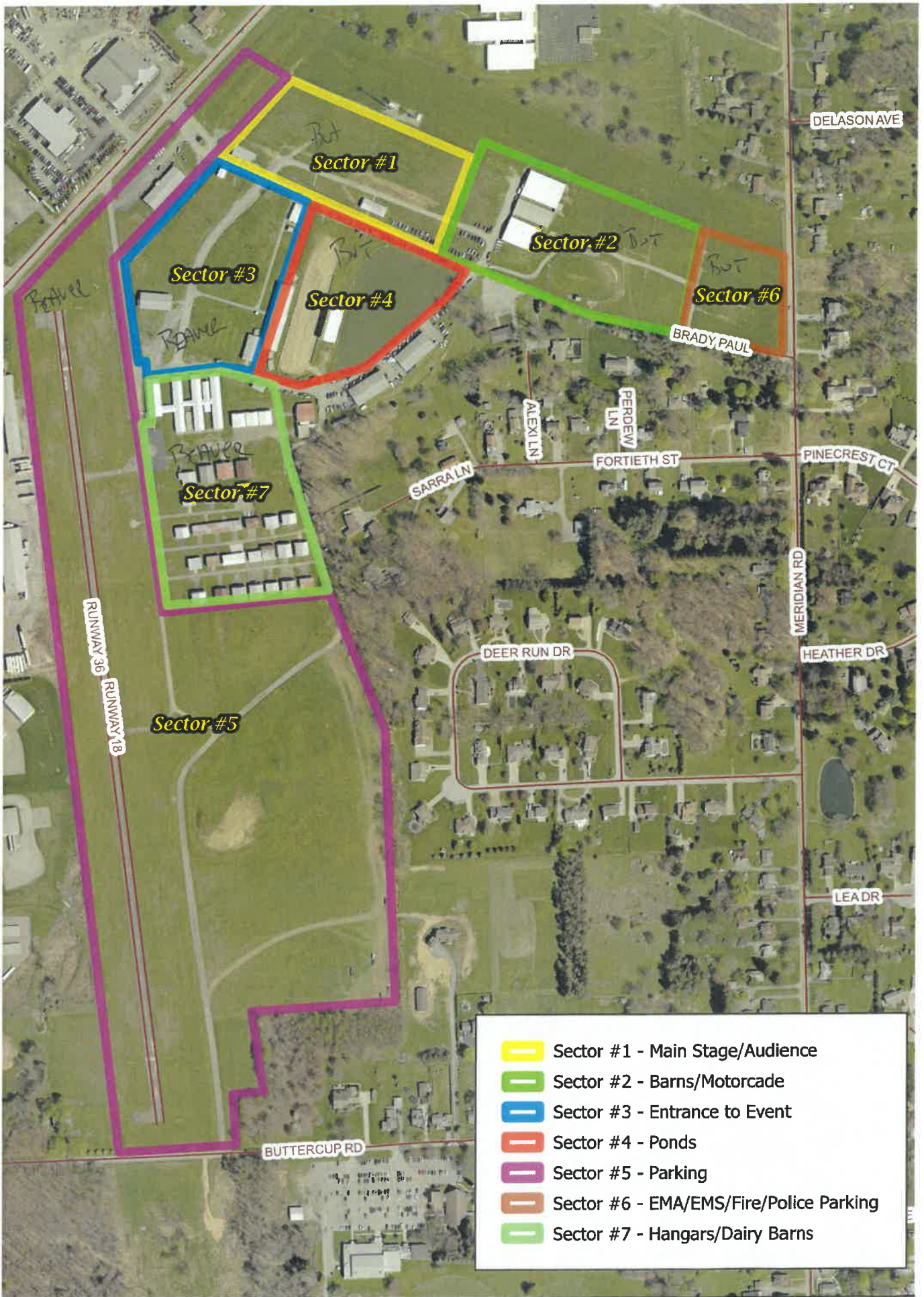
PERDEW LN

ALEXI LN

SARRAL LN

EVANS CITY RD





COMMUNICATIONS LIST (ICS 205A)

1. Incident Name: Presidential Rally - Butler Farm Show	2. Operational Period: Date From: 7/13/2024 Date To: 7/13/2024 Time From: 0900 Time To: 1900	
3. Basic Local Communications Information:		
Incident Assigned Position	Name (Alphabetized)	Method(s) of Contact (phone, pager, cell, etc.)
Butler ESU	Beachem, Joe	10B31 / Cell 724-553-6976
Beaver ESU	Bitts, Alex	
Butler ESU	Crawford, Denny	10C3 / Cell 724-679-9483
Butler ESU	Fleming, Kory	10B2 / Cell 760-859-6558
Washington Regional SWAT	Huminsky, Ben	Cell / 972-345-4268
Butler ESU	Jurysta, Jon	10R65 / Cell 724-831-6642
Butler ESU	Kopas, Chris	10A12 / Cell 724-504-7394
Washington Regional SWAT	Kuzak, Guy	Kuzak / Cell 412-860-9161
Butler ESU	Lenz, Edward	10C1 / Cell 412-841-6956
Butler ESU	Mathews, Alyssa	10N50 / Cell 724-591-0123
Butler ESU	May, Jacob	10B27 / Cell 404-345-7868
Butler ESU	Mayhugh, Bill	1506 / Cell 724-882-0077
Washington Regional SWAT	McCarthy, Tom	
Butler ESU	McDonald, Ray	10R69 / Cell 724-831-1730
Butler ESU	Mikulan, Kevin	10C2 / Cell 412-316-6716
Butler ESU	Murcko, Mike	10S3 / Cell 412-612-7070
Butler ESU	Niederlander, Andrew	10B19 / Cell 724-996-2395
Beaver ESU	Nichol, Greg	
Beaver ESU	Nichol, Mike	
Beaver ESU	O'Sche, Joe	
Butler ESU	Oesterling, Nate	10A22 / Cell 724-996-0627
Beaver ESU	Priolo, Mike	
Butler ESU	Renaud, Christian	10N55 / Cell 724-584-7297
Butler ESU	Schaffner, Jon	10B1
Butler ESU	Setnar, Matt	10A14 / Cell 412-216-1084
Washington Regional SWAT	Shaffer, Matt	
Washington Regional SWAT	Shaffer, Ben	
Beaver ESU	Shane, Tom	Cell 724-709-5777
Washington Regional SWAT	Short, Pat	
Butler ESU	Slack, Ryan	10A28 / Cell 724-575-2560
Butler ESU	Sneddon, Jeff	10B25 / Cell 724-504-2972
Butler ESU	Soler, Nico	10R1 / Cell 724-290-4264
Butler ESU	Sulerud, Mike	10A2 / Cell 724-986-9447
Butler ESU	Wagner, Matt	10S1 / Cell 724-355-0684
4. Prepared by: Name: _____ Position/Title: _____ Signature: _____		
ICS 205A	IAP Page 1 of 2	Date/Time: _____

COMMUNICATIONS LIST (ICS 205A)

1. Incident Name: Presidential Rally - Butler Farm Show		2. Operational Period: Date From: 7/13/2024 Date To: 7/13/2024 Time From: 0900 Time To: 1900	
3. Basic Local Communications Information:			
Incident Assigned Position	Name (Alphabetized)	Method(s) of Contact (phone, pager, cell, etc.)	
Butler ESU	Wilson, Bill	10A20 / Cell 412-445-2993	
Beaver ESU	Woods, Jason		
Butler ESU	Zaliponi, Aaron	10A1 / Cell 724-841-4729	
Secret Service - Counter Sniper		Hercules 1	
Secret Service - Counter Sniper		Hercules 2	
Lead / Transportation	SA Meredith Bank	Cell 202-441-2873	
Farm Show Site	SA Myosoty Perez	Cell 202-763-3238	
Farm Show Site	SA Dana Dubrey	Cell 202-253-6866	
Intelligence	SA Chase Clowser	Cell 202-384-4582	
Technical Security Lead	TSI John Edwards	Cell 202-536-7350	
Counter UAS <i>Drone</i>	SA Eduardo Castro	Cell 702-236-0642	
Field Office Supervisor	SAIC Tim Burkner	Cell 202-538-9647	
Farm Show Supervisor	ATSAIC Brian Pardini	Cell 202-420-1379	
4. Prepared by: Name: _____		Position/Title: _____ Signature: _____	
ICS 205A	IAP Page <u>2 of 2</u>	Date/Time: _____	

ASSIGNMENT LIST (ICS 204)

1. Incident Name: Presidential Rally - Butler Farm Show		2. Operational Period: Date From: 7/13/2024 Date To: 7/13/2024 Time From: 0900 Time To: 1900		3. Branch: Division: Group: Staging Area:
4. Operations Personnel: Name _____ Contact Number(s) _____ Operations Section Chief: <u>Butler ESU - Commander - E Lenz</u> Branch Director: _____ Division/Group Supervisor: _____			Reporting Location, Special Equipment and Supplies, Remarks, Notes, Information	
5. Resources Assigned:		# of Persons	Contact (e.g., phone, pager, radio frequency, etc.)	
Resource Identifier	Leader			
CAT #1	Schaffner 10B1	6	Radio / Cell # 724-355-1994	
CAT #2	Shane	6	Radio / Cell # 724-709-5777	
QRF	Sulerud 10A1		Radio / Cell # 724-986-9447	
Tac Command	Lenz 10C1		Radio / Cell # 412-841-6956	
Tac Ops / CAT Liason	Mikulan 10C2		Radio / Cell # 412-316-6716	
Tac Ops	Crawford		Radio / Cell # 724-679-9483	
SS Countersniper	Marciniak		Radio / Cell # 202-713-6906	
SS - Lead	Bank		Cell # 202-441-2873	
SS CAT	Box		Cell # 615-483-7617	
TEMS Ops	Soler 10R1		Radio / Cell # 724-290-4264	
6. Work Assignments:				
7. Special Instructions:				
8. Communications (radio and/or phone contact numbers needed for this assignment): Name/Function _____ Primary Contact: indicate cell, pager, or radio (frequency/system/channel) _____ _____ / _____ _____ / _____ _____ / _____ _____ / _____				
9. Prepared by: Name: _____ Position/Title: _____ Signature: _____				
ICS 204	IAP Page _____	Date/Time: _____		

