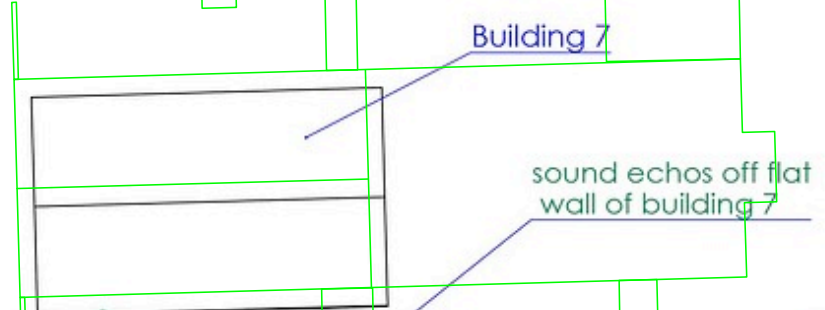
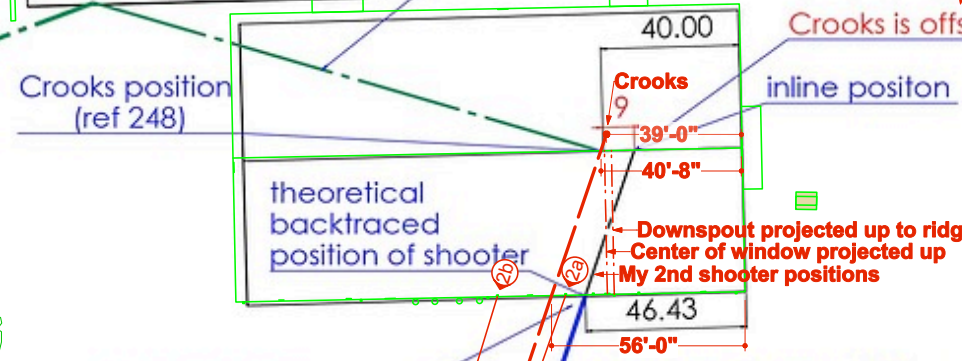


height of bleachers		
	inches	feet
Drawing (ref 274)	134.4	11.2
Bullet impact position (ref 870)	-4.152	-0.346
wooden blocks / support poles under preloaded pressure (ref 547)	1	0.083333
difference AGR in height (ref 954)		1
<b>Total height of bleacher</b>		<b>11.93733</b>

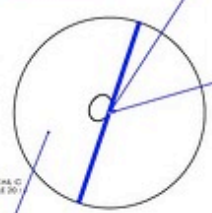


Offset away from ridge down slope?

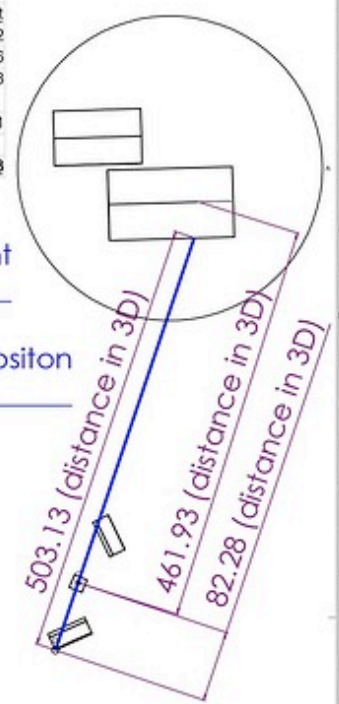


Trumps ear height 11.583 (ref 349)

Crooks is offset by 9 feet



Trumps ear position XZ (ref 465)



no echoes from inside the room

floor level Trump 1337 topographic KML map

Crooks position

DETAIL A SCALE 2:1

We are in agreement if you mean vert. offset to 2nd shooter line of fire

Crooks is offset by 6 feet

We are in agreement. I have 40'-8"

theoretical backtraced position of shooter (including gravity and wind)

Difference between AGR 6 floor and grade at south bleacher? right?

floor level 1336 topographic KML map

Bleachers height position 11.937 (ref 349)

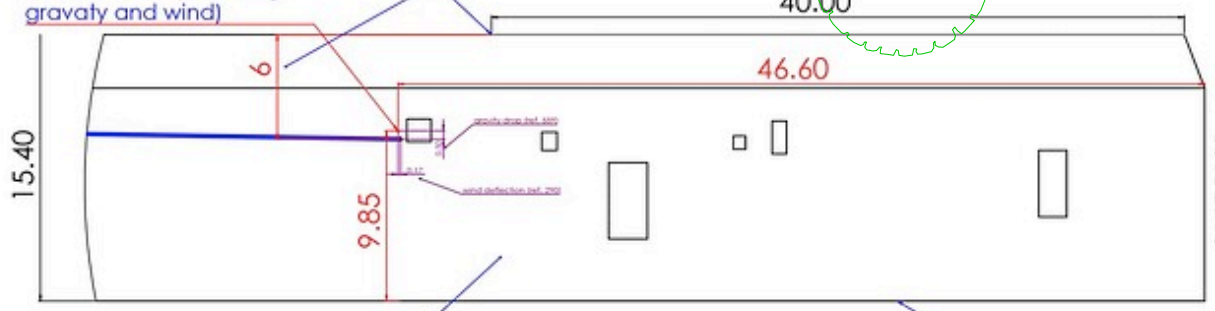
Bleachers XZ position (ref 728)

From AGR 6 floor to stage is my number

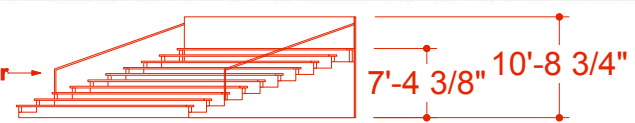
height stage		
stage (ref 600)	48	4' 3"
difference AGR and bleachers (ref 402)	24	4' 3"
<b>Total height stage</b>	<b>72</b>	<b>8' 5"</b>

height of ear		
height of Trump (ref 340)	74	6.166667
height of ear (ref 175)	-5	-0.41667
Trumps posture / knee slightly bent (ref 409)	-2	-0.16667
	67	5.583333
<b>Total height Trumps ear</b>		<b>11.58333</b>

According to our research in this Forum the first shot hits Trumps Ear and then the right corner of the bleachers (ref. 723 and ref. 965) Therefore, we have two points locked in space. Using these two positions we can back trace the bullet and find out the origin of the shooter. According to this document the back traced bullet does not lead to the position of Crooks on the roof (offset in vertical position is 8 feet and horizontal offset is 9 feet). The back traced bullet originated from the wall of building 6 (46.6 feet from the side wall of building 6 and 9.85 feet from the floor). Therefore, according to this document, there are two shooters.



South (and North) side bleacher



Peak Property part of an investigation		
Bullet Back Tracing		
Case No.	Date	Ref
ref 8004-4		ref 8004-4