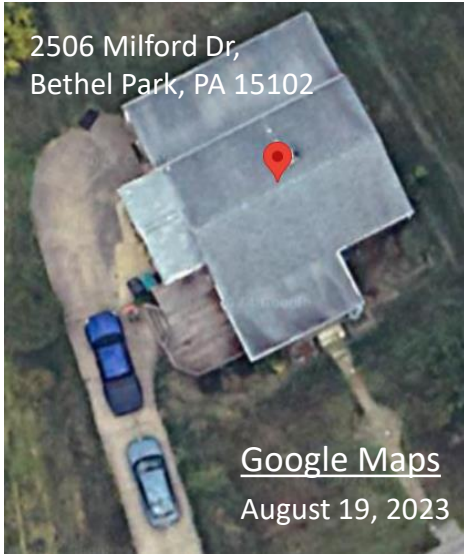


A Five-Part Analysis

Rev 3

- Part 1: Did he park in an AGR parking lot?
- Part 2: Did he park near the AGR main entrance?
- Part 3: Did he drive a Hyundai Sonata or an Elantra?
- Part 4: Confirmation from the FBI?
- Part 5: The detection of explosive devices.



Sheetz Gas Station

Across From AGR Main Entrance



Introduction: [The Available Evidence](#)



A shooting range, a gun store, and a ladder purchase: Tracking the Trump rally gunman’s movements leading up to his attack (July 15, 2024)

“Then, Crooks drove his **Hyundai Sonata** about an hour north, joining thousands of people from around the region who flocked to Trump’s rally in Butler, Pennsylvania. He parked the car outside the rally,...” ([CNN Newsweek](#))



A timeline of the assassination attempt on former President Donald Trump (July 21, 2024)

“— Crooks, 20, parked at **a gas station** lot about one-third of a mile from the event.” ([AP Politics](#)).



Explosive devices found in Trump shooter Thomas Matthew Crooks’ car after failed assassination attempt at rally: report (July 14, 2024,)

The car, driven by 20-year-old Thomas Matthew Crooks, was **found not far from the Trump rally** in Butler, Pa., sources close to the investigation into the shooting told The Wall Street Journal. ([NYP](#))



Butler Investigation Evidence Photos

Published August 28, 2024. ([FBI > News > Press Releases](#))

Source: Allegheny County, PA Police Department

Introduction: The Available Evidence

Timeline Map

1. Patsy first sighted on AGR grounds at ~5:04 pm. (Green Dot 7)

(See my “Timeline Analysis – Offsite Activities)

2. Patsy spotted at 5:32 pm by Nicol, no backpack mentioned, then Nicol reported “we lost sight of him” at 5:42 pm.

3. Patsy spotted again by Nicol at 6:02 pm, 20 minutes later, with a backpack.

Key: The patsy left the AGR grounds to get his backpack and rifle, most likely still in his car/trunk.

BC After Report
5:10 pm– First Observed Suspect by - Walked by window **2**

5:14 pm – Picture of Suspect
5:28 pm – Picture of Bike **3**

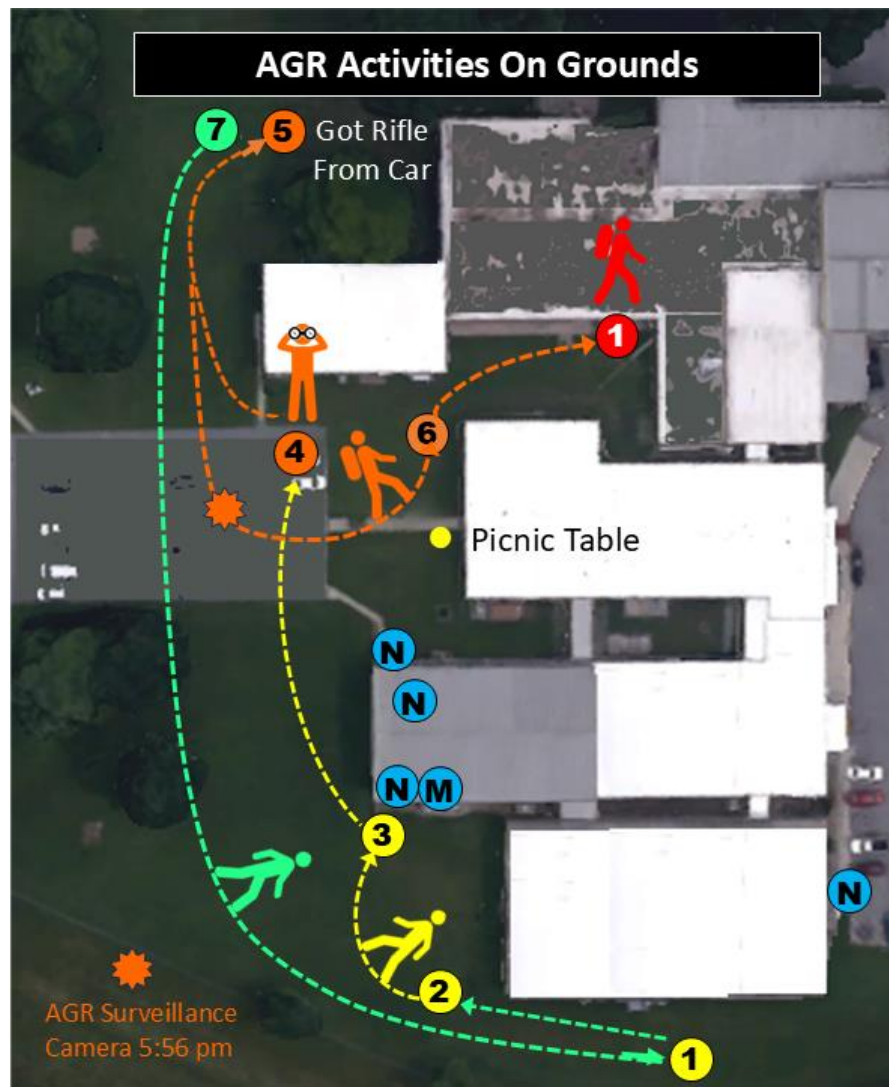


Radio Communications

5:42 pm - “Just an FYI, we had a younger white male, long hair, lurking around the AGR building. He was viewed with a range finder sighting the stage ... **We lost sight of him.**” (Sighted at 17:32) **4**

6:02 pm – “All right, subject is in between the AGR building. **He has a backpack.**” Sgt. Greg Nicol **6**

From my “Timeline Analysis – AGR Grounds”



Video & Text Evidence



5 **Nicol’s Known Locations (Window, Floor)**
 5:10 pm – SW, 2nd Floor
 5:14 pm – SW, 2nd Floor
 5:28 pm – NW, 2nd Floor
 5:32 pm – NW, 2nd Floor
 6:02 pm – NW, 1st Floor
 6:13 pm – East, Door 9



Part 1: Did he park in an AGR parking lot?

2020–25 Sonata



The first place to look for the patsy’s “Sonata” would be in the AGR parking lots, since all other news media reported that he parked “near the rally,” and because a BeC Counter-Sniper spotted someone at a picnic table near AGR 6, Door 9, along with a car newly parked there. It was initially thought to be the patsy and his car, but later it was proven he was in Vendor Alley at that time. **No Sonatas (or Elantras) were found in those lots.**

2015–19 Sonata



East Parking Lot – South End



Screenshot at 18:10:22
In BWC2-122110
(BWC of M500-010482
Vehicle Driver)

State Police

Attendee's
Motorcycle

Butler Township Police

Unmarked LE Vehicle
Parked at 18:09:26
In BWC2-122111

West Parking Lot

Dave Stewart’s 5:38 to 6:06 video at 9:14 mark.



BWC-2122109 18:19:22 Lot Empty

Jason Woods’
4:26 pm Text

Someone followed our lead and snuck in and parked by our cars just so you know



Unmarked

City of Butler Alpha Romeo

Sidebar Analysis – Patsy’s Car

East Lot Unmarked Car & Alpha Romeo

Bodycam BeC ESU 2



Someone followed our lead and snuck in and parked by our cars just so you know

I'm just letting you know because you see me go out with my rifle and put it in my car so he knows you guys are up there he's sitting to the direct right on a picnic table about 50 yards from the exit

SQ400 AND SQ200 will be brought to the scene by Zip and Nico

The Alpha Romero is most likely Mike Murcko's car, since "our cars" was texted to Nicol and Murcko, and Nicol drove the SQ200. per the Butler County Detail Plan.

This is Speculation



Sidebar Analysis – Patsy’s Car

North Parking Lot



Lt. Matthew Pearson

M500-016197 - LEO grabbing a bottle of water.



Hyundai Elantra

BWC2-122104

LEOs

LEOs

LEO

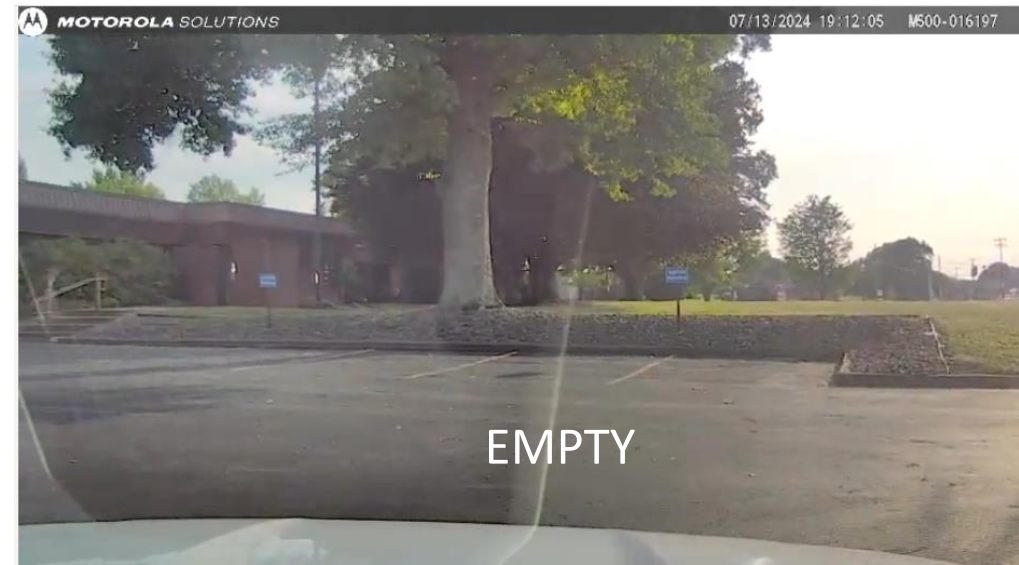
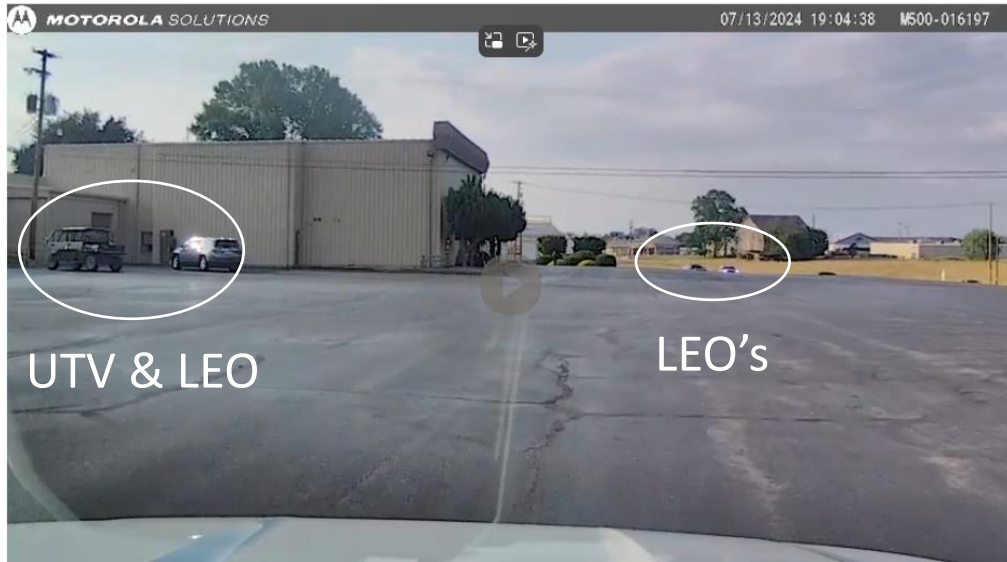
Not a Hyundai

Butler Twp PD PA
Matthew Pearson
BWC2-122104

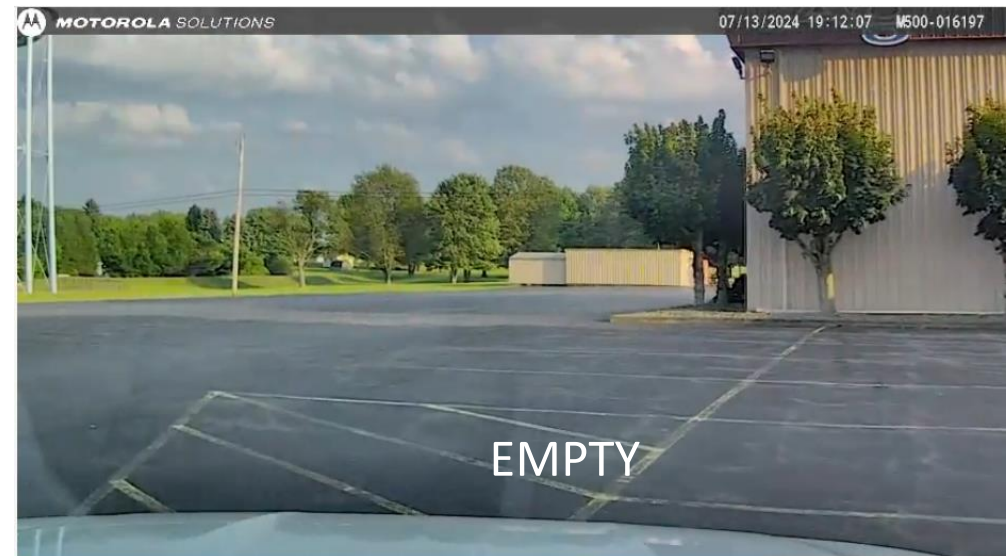
[mic] [brakes] [lights]

Sidebar Analysis – Patsy’s Car

North & East Parking Lots



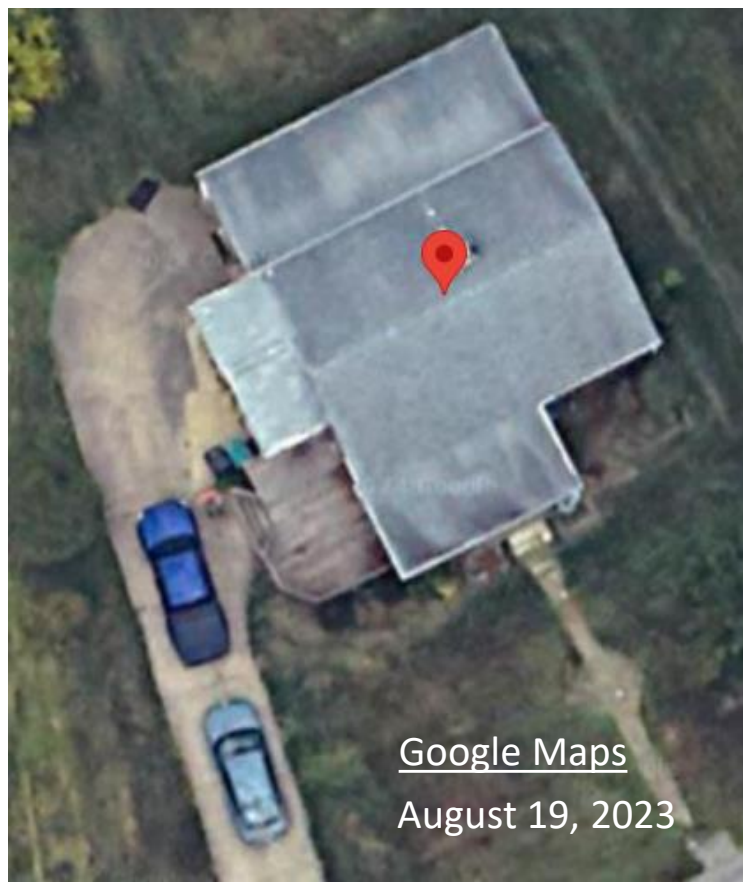
More Dashcam M500-016197 Video of Front Entrance Parking Lot.



Part 2: Did he park near the AGR main entrance?

If the patsy did not park in the AGR parking lots, maybe he parked across the street from it. Jon Malis captured him walking onto the AGR property at the main entrance at ~5:04 pm . The video cuts short and oncoming traffic hides what could be one or two vehicles parked across the street, but hidden by the oncoming SUV. A Hyundai Elantra was parked there after the shooting. **Was it the patsy’s car?** We’ll get back to that question later. For now, let’s examine the scenarios for when he may have parked his car there.

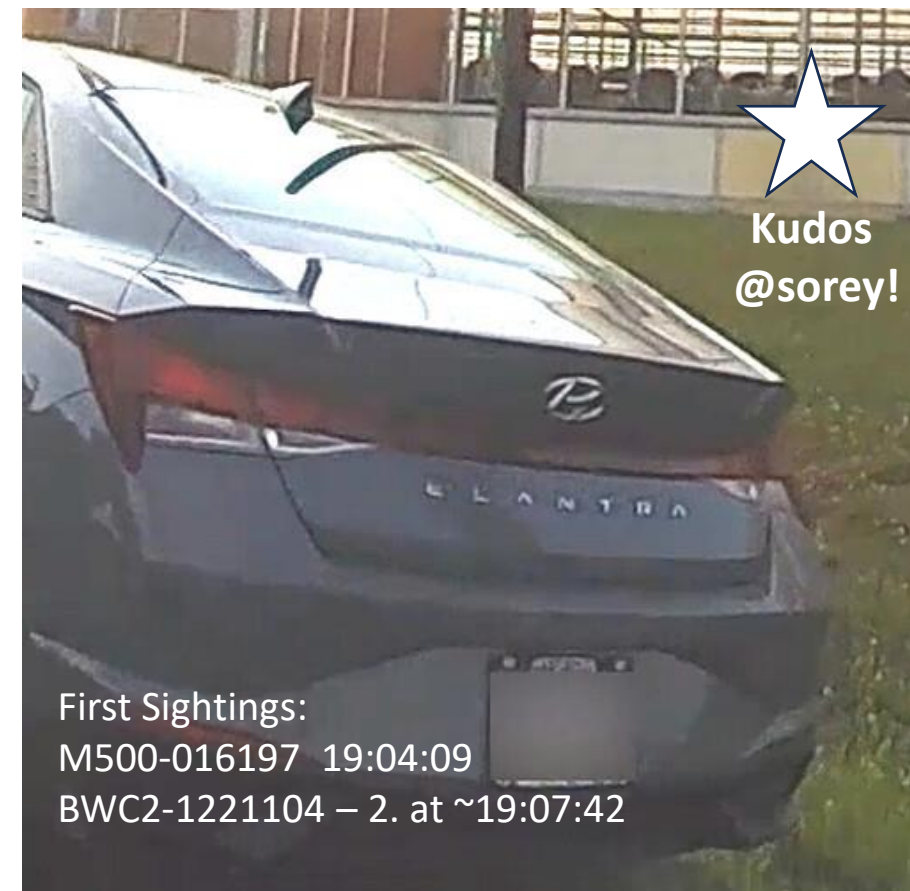
Seen In Patsy’s Driveway



Jon Malis’ Dashcam



Elantra Parked Across from AGR Entrance



Sidebar Analysis – Patsy’s Car

Four Car Parking Scenarios

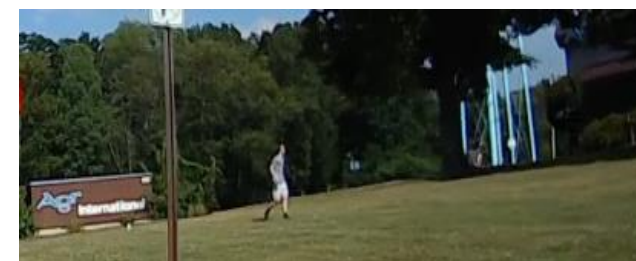
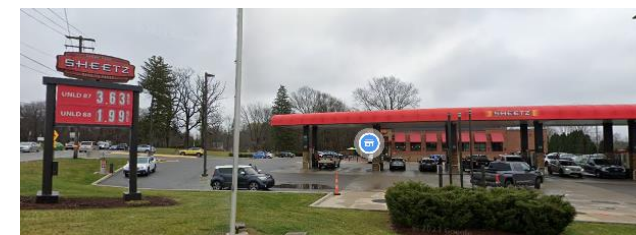
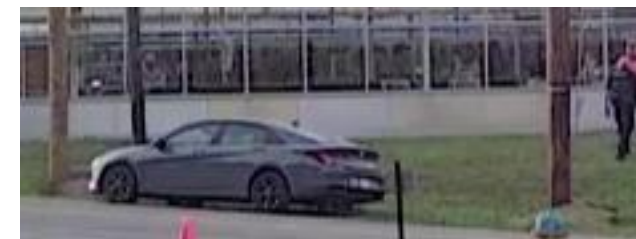
Key Criteria: Nicol reported spotting the patsy, then losing him, with no backpack at 5:42 pm, then reported spotting him with a backpack at 6:02 pm. He was gone 20 minutes. Wherever the car was parked it had to be within a 20- minute round trip from AGR.

SCENARIO 1: AP reported incorrectly and he parked across the street from the AGR main entrance when he arrived in Butler for the second time that day. This means the parked Elantra could have been his car. It also suggests that given the ~5:04 pm sighting, that he stopped by his car after leaving the USSS security area for some unknown reason. (No time analysis is needed.)

SCENARIO 2: AP reported correctly, he initially parked at Sheetz, but he never moved his car afterwards. That would mean the parked Elantra was not his car. If not, did he have time to walk back to get his backpack and rifle during the 20 minutes Nicol lost site of him? (Time analysis is needed.)

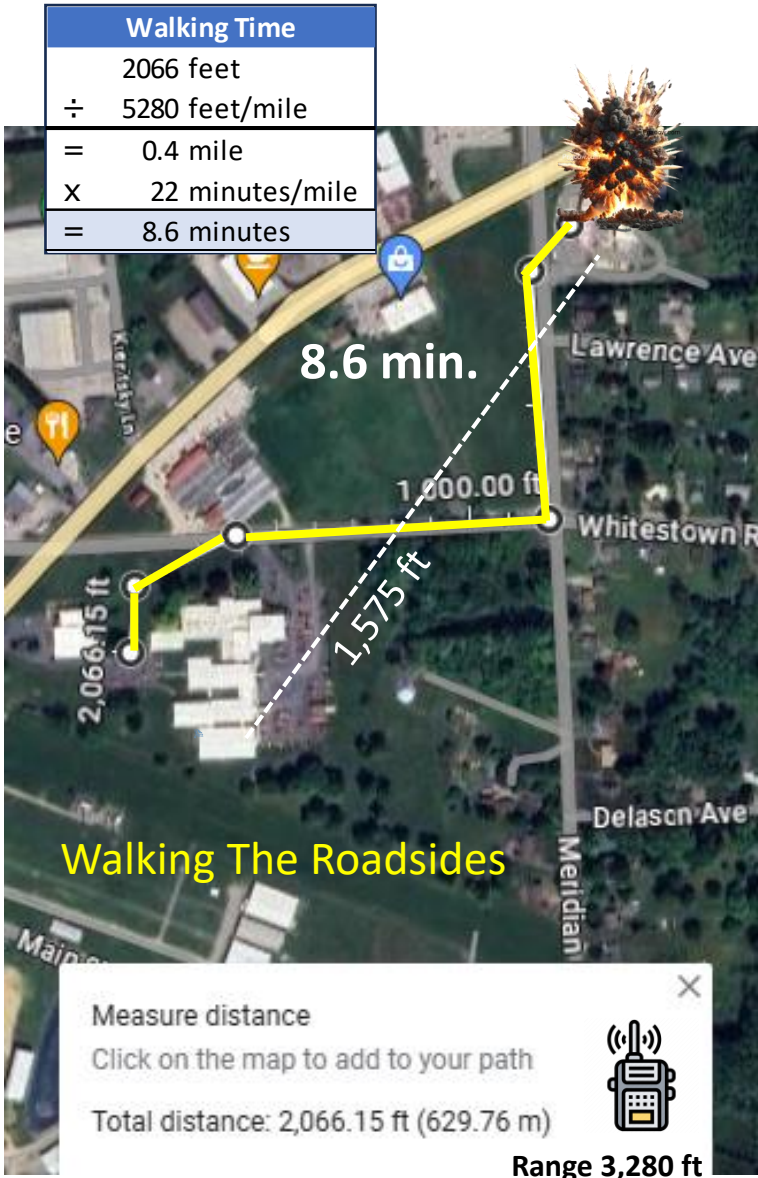
SCENARIO 3: AP reported correctly, he initially parked at Sheetz, but after the ~4:30 pm incident at the USSS security area, reported by CNN and other media, he moved his car to the AGR main entrance area. If so, did he have time before the ~5:04 sighting in Malis’ dashcam? (Time analysis is needed.)

SCENARIO 4: AP reported correctly, he initially parked at Sheetz, but after Nicol lost site of him at 5:42 pm, he moved his car to the AGR main entrance area. If so, did he have time before Nicol spotted him again at 6:02 pm? (Time analysis is needed.)



Jon Malis Dashcam
(Located at 5:56 pm in article’s timeline.)

Scenario 2: He parked at Sheetz and kept it there.



Justification

1. He initially parked at Sheetz per AP
2. Less than **20 min. walk** roundtrip (See Time ESU Lost Sight, below.)
3. Within walking distance elsewhere
4. Did not require moving his car at all
5. Rifle stays locked up out of sight
6. North side of AGR is away from rally
7. Hidden part of the way by large trees
8. Little if any law enforcement
9. Did not require a handler’s help
10. Good location for a major distraction:
 - a. Blowing up a gas station
 - b. Blocking a main exit route

Time Between Sightings:

5:42 pm to 6:02 pm = 20 Minutes

Round Trip Walk Time

13.6 min to 17.2 min

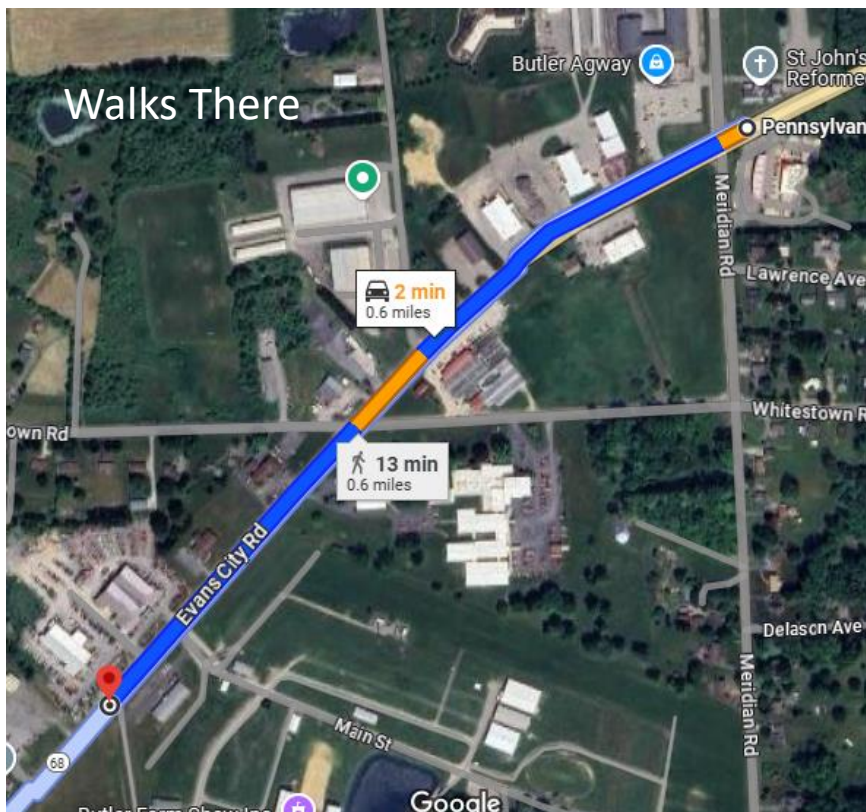
This scenario is possible.



Scenario 3: He reparked it there after the security area incident.

Justification

1. The patsy did not have his backpack with him while walking through Vendor Alley.
2. The most logical place to keep his rifle from being discovered before he needed it was in his trunk.
3. There is no evidence that the patsy hid his rifle anywhere else, only speculations.
4. He was first seen with his backpack at 6:02 pm, and was not seen holding it while initially traversing the roof. It was in his backpack.

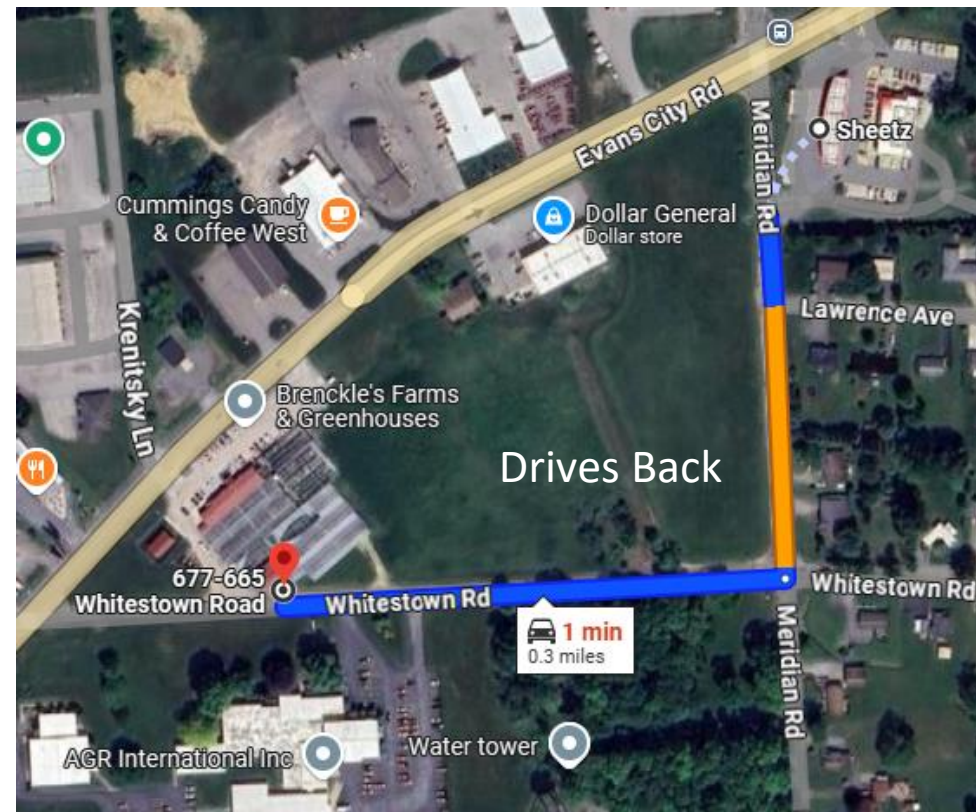


Time Between Sightings:
~4:30 pm to ~5:04 pm =
34 Minutes

Walking to Sheetz:
~15 min.
(adding 2 minutes
at USSS security area)

Driving to AGR:
~ 1 min.

**This scenario
is possible.**



Scenario 4: He reparked it there when he got his backpack/rifle.

Justification

1. The patsy did not have his backpack with him while wandering around the AGR grounds.
2. The most logical place to keep his rifle from being discovered before he needed it was in his trunk.
3. There is no evidence that the patsy hid his rifle anywhere else, only speculations.
4. He was first seen with his backpack at 6:02 pm, and was not seen holding it while initially traversing the roof. It was in his backpack.



Time Between Sightings:

5:42 pm to 6:02 pm =
20 Minutes

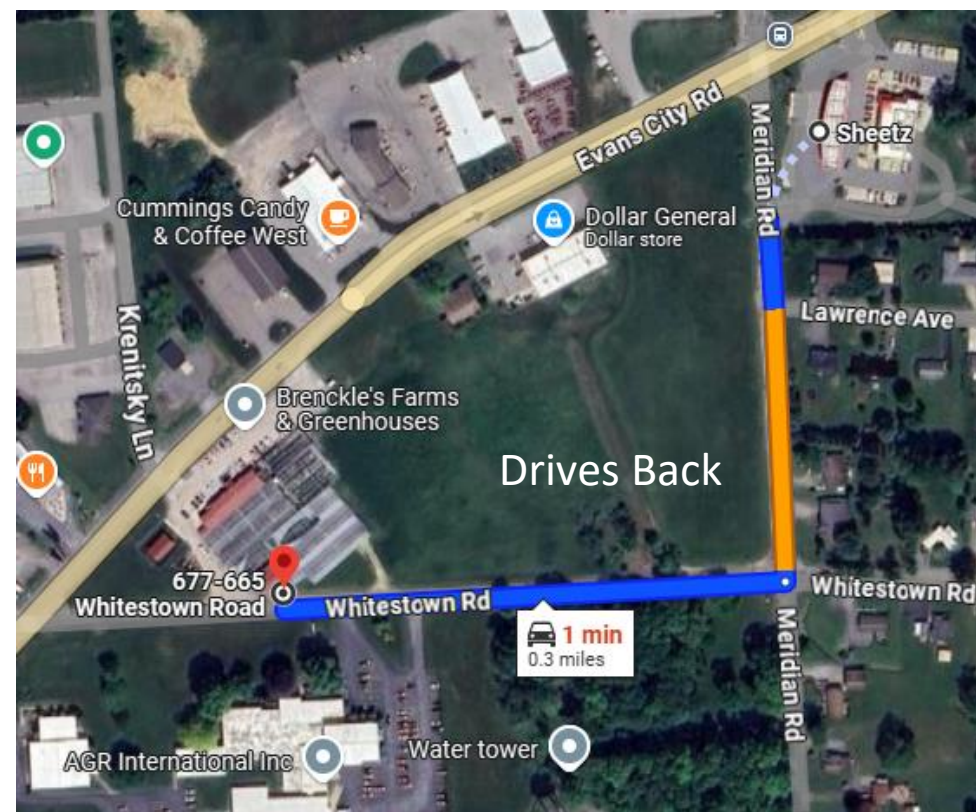
Walking to Sheetz:

~6.8 min.

Driving to AGR:

~ 1 min.

This scenario is possible.



Part 3: Did he drive a Hyundai Sonata or an Elantra?

The CNN report of a Hyundai Sonata may have been misidentification, a misstatement, or misdirection, so a Hyundai Elantra shouldn't be ruled out for Crooks' car.



Comparing the parked car's body to those of the newest three generations of Hyundai Elantra's, we see that the rear end clearly matches the 2021-2024 generation model.

2020 Elantra (2019-2020)



2022 Elantra ()



2024 Elantra (2024-202?)



Sidebar Analysis – Patsy’s Car

Was the evidence photo car a Hyundai Elantra?

The next step in the analysis is to determine if the car shown in the FBI evidence photo is a Hyundai Elantra. If not, then the car parked across from the AGR entrance could not have been the patsy’s car. A comparison between the evidence car’s trunk and an Elantra’s trunk should clearly rule out the parked car not being the patsy’s. First, compare the depth of the trunk and the latch area on all three cars.

Elantra Parked Across from AGR Entrance



Example 2023 Elantra



Example 2023 Sonata



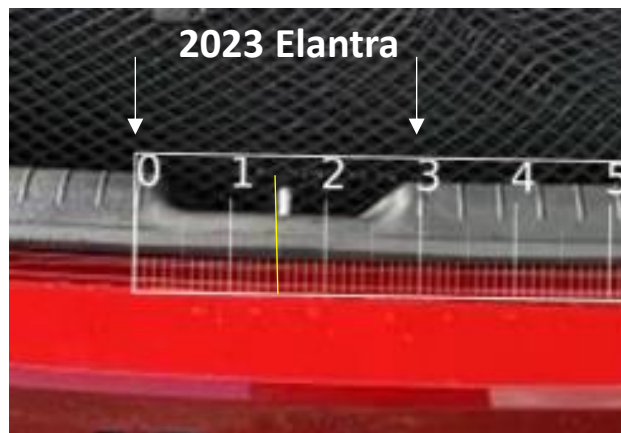
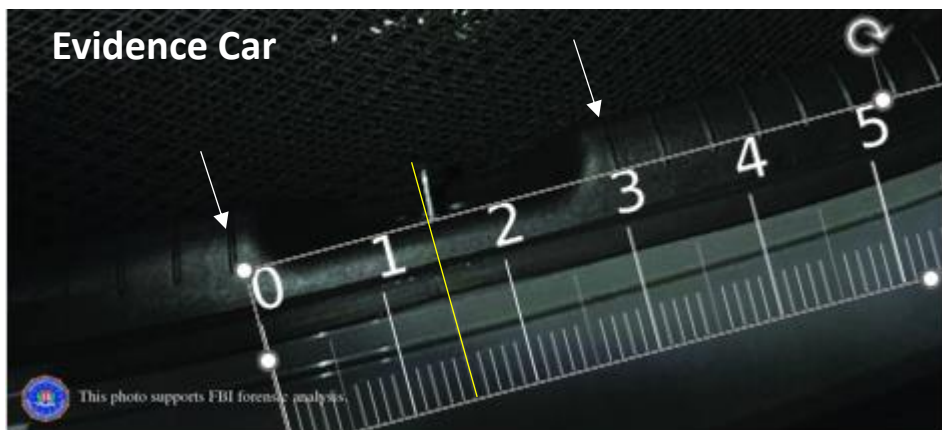
Patsy’s Car Per FBI Evidence



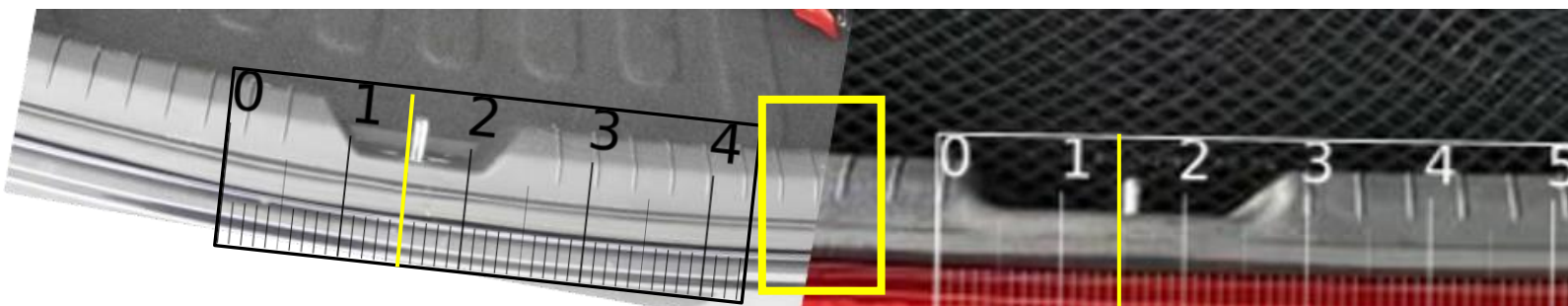
Sidebar Analysis – Patsy’s Car

The evidence car is a Hyundai Elantra!

Step 1: First a ruler was placed with the 0 and 3 on the first ridges on the plastic body part before and after the latch hook. The ruler was scaled down to do the same on the 2023 Elantra. All aspects of the plastic body part align on both vehicles at the same spot on the ruler.



Step 2: Then the image of the Sonata was scaled down to match the width of the plastic body part of the Elantra, rotating the image as needed to match widths. Using the same scale of ruler as the Elantra, the 1 ½ mark was placed on the latch hook of the Sonata.



Conclusion: The recessed body part that accepts the trunk lid latch clearly has the same dimensions as the Elantra, whereas the Sonata has a much smaller recess area.

Sidebar Analysis – Patsy’s Car

The evidence car is a Hyundai Elantra!

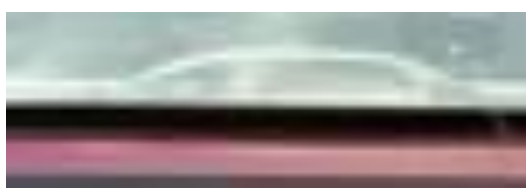
The car in the evidence photo has the same high mount brake light as the 2023 Elantra, which is totally different from the high mount brake light of a 2023 Sonata, as seen in the OEM parts diagrams.

FBI Evidence

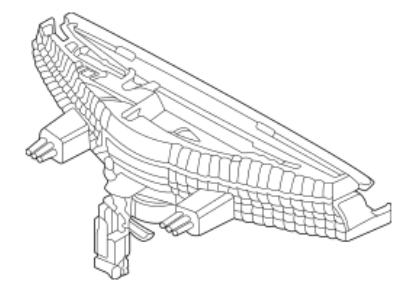
2023 Elantra



High Mount Brake Lights

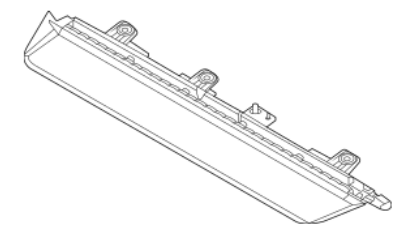


2023 Elantra



Hyundai (92700-AA000)

2023 Sonata



Hyundai (92700-L1000)

Having demonstrated that the car in the evidence photo is an Elantra, not a Sonata as reported by CNN, it now must be demonstrated that it is likely the same Elantra as the one parked near the AGR main entrance, and tie it to the patsy beyond just him being spotted near it. **Further analysis based on a vehicle seen in the patsy’s driveway in Google Maps was started by Peak Prosperity contributor @daniloraf, who was joined by @RedRanAmber and @sorey.**



Kudos @daniloraf!

Sidebar Analysis – Patsy’s Car

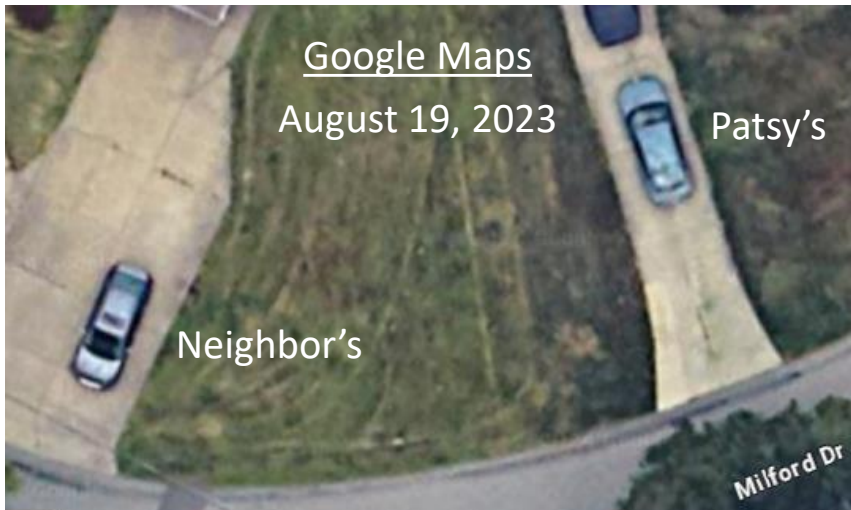
Can we connect the Elantra by AGR to the patsy?

Other than the location of the Elantra being across the street from where the patsy walked past the AGR main entrance sign, is there another way we can connect that car to the patsy? Using the Google Map satellite image of a grayish vehicle in the patsy’s driveway gives us a way, if that were in fact the patsy’s car, which it likely was.

Comparing the satellite view of the car in the patsy’s driveway to the overhead image of a 2022 Hyundai Elantra, provided by Carsaver.com, we get a body style profile match!

To be sure it’s the right car, however, we need to do a color comparison between the driveway Elantra, the Elantra parked across from the AGR Entrance, and the Elantra in the evidence photo.

Patsy’s & Neighbor’s Driveways 8/19/2023



Patsy’s
8/19/2023



[Carsaver](#)
(Virtual Showroom)



Kudos @sorey!

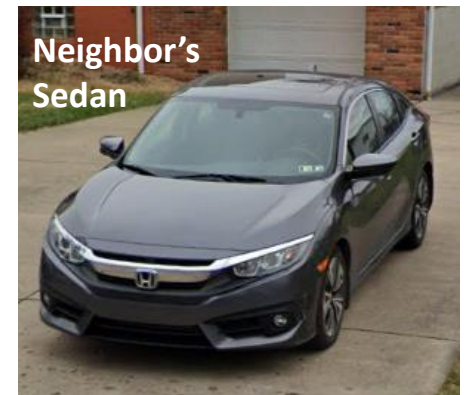
Neighbor’s
Sedan



Hyundai



Neighbor’s
Sedan



The car parked near the AGR entrance is painted Hyundai Elantra Gray.

Hyundai Elantra came in 5 trims for 2023: SE, SEL, N Line, Limited and N. “N” is a racing model and can be ruled out. The N-Line is a performance model that can easily ruled out by looking for **twin-exhaust outlets**.

N-Line Colors

- Fluid Metal
- Red
- Black
- Electric Shadow

- Ceramic White
- Blue



Twin-Exhaust Outlets



(Brightness Enhanced)



SE, SEL & Limited Colors

- Red
- Silver
- Black
- Gray
- White
- Blue

Available Colors



EXTERIOR



Silver

[LINK](#)



Available Colors



EXTERIOR



Gray

[LINK](#)

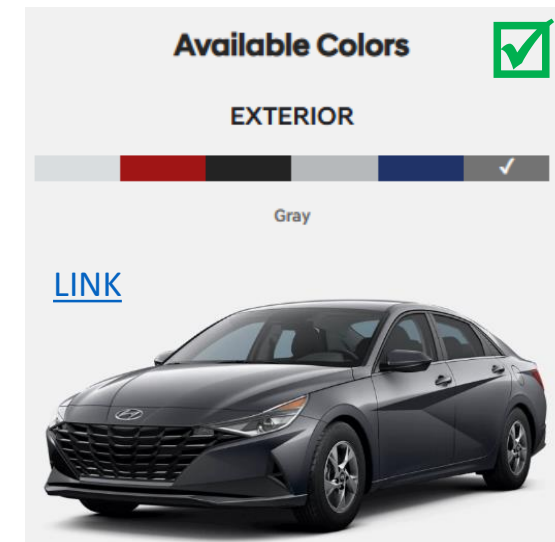
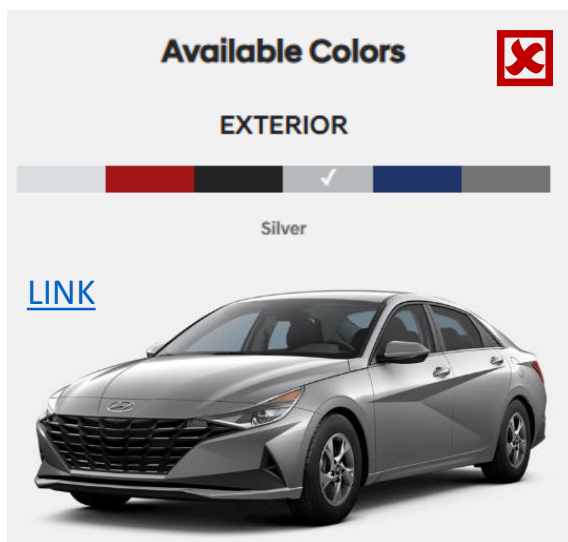


The evidence car is likely painted Hyundai Elantra gray also.

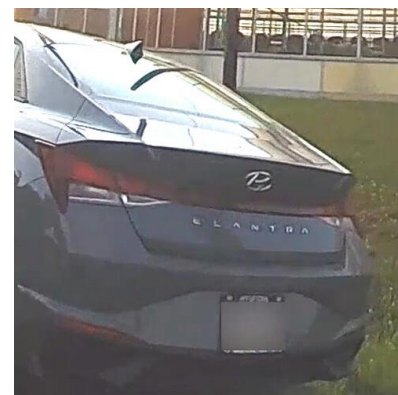
The Hyundai Elantra FBI evidence photo was taken using what was likely a high lumen LED (tactical most likely) flashlight by Allegheny County, PA Police. The edge of the trunk lid appears to be a silver color due to the “color rendering” produced by the flashlight beam shining directly on it. The lower bumper appears closer to the natural color, which due to the late hour is a subdued gray. The same effect is seen from the sun on the parked Elantra’s trunk lid.

SE, SEL & Limited Colors

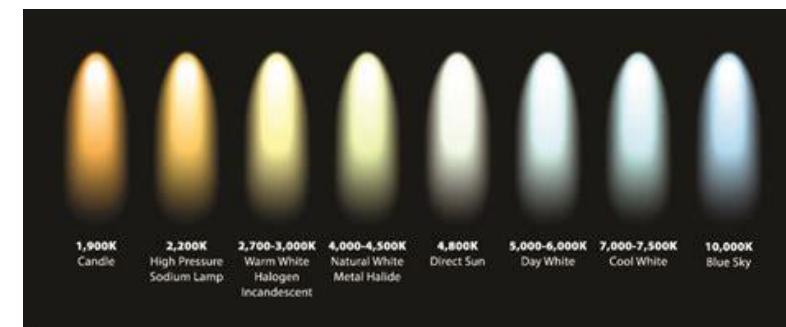
- Red
- Silver
- Black
- Gray
- White
- Blue



“Color rendering, expressed as a rating from 0 to 100 on the Color Rendering Index (CRI), describes how a light source makes the color of an object appear to human eyes and how well subtle variations in color shades are revealed. The higher the CRI rating is, the better its color rendering ability. A high-performance white-light LED flashlight’s CRI is about 75 % (higher the color temperature, lower the CRI), while good neutral white flashlight and warm-white flashlights’ CRI are about 80%.” (Source: [Nightcore](#))



Color Temperature (not heat) Chart



The neighbor’s car is painted Honda Accord Modern Steel Metallic.

Neighbor’s Car



2018–22 Accord LX



Each trim for the Honda Accord came with different wheels from the factory, and we can see that the neighbor’s car has wheels that match the LX trim.

After determining the make, model, and trim of the neighbor’s vehicle, we can determine the exterior paint colors available for that trim. It turns out the vehicle is a 2018-2022 Accord LX, and the color is Modern Steel Metallic.





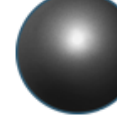



Neighbor’s Car



Now we have another reference point to compare to, and can analyze both vehicle’s colors as seen in the Google Maps satellite images.



Accord LX Trim Wheels

							
Champagne Frost Pearl CODE #YR-591P	Crystal Black Pearl CODE #NH-731P	Kona Coffee Metallic CODE #YR-600M	Lunar Silver Metallic CODE #NH-830M	Modern Steel Metallic CODE #NH-797M	Platinum White Pearl CODE #NH-883P	Obsidian Blue Pearl CODE #B-588P	Radiant Red Metallic CODE #R-569M

Accord LX Exterior Paint Options ([LINK](#))

Do the car colors in the satellite view align with the photographic evidence?

Neighbor’s Car



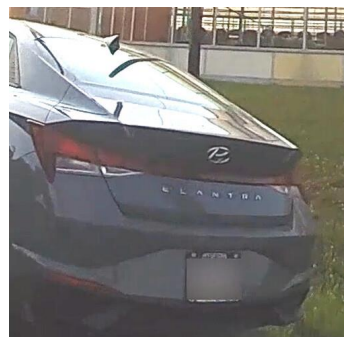
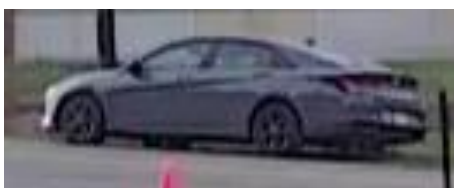
Patsy’s Car



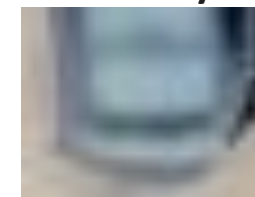
The difference between the satellite views of the metallic paint on the neighbor’s car and the flatter gray paint on the assumed patsy’s car is clearly obvious. Judging by the lack of shadows, that satellite imagery appears to be taken midday on a clear day. The Color Temperature is cooler midday, which accounts for both vehicles appearing lighter in color. The street view of the neighbor’s car (December 2022), for comparison, was taken on an overcast day. [\(LINK\)](#)

When comparing the satellite view of the assumed patsy’s car to the AGR parked Elantra, consideration must be given to the time of day and the resulting Color Rendering Index based on Color Temperature. **It’s very likely the same color.**

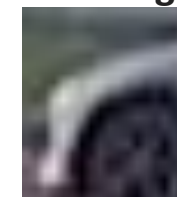
This comparison simply demonstrates that the hue of the assumed patsy’s car should be expected to change with a change in the sun’s Color Temperature.



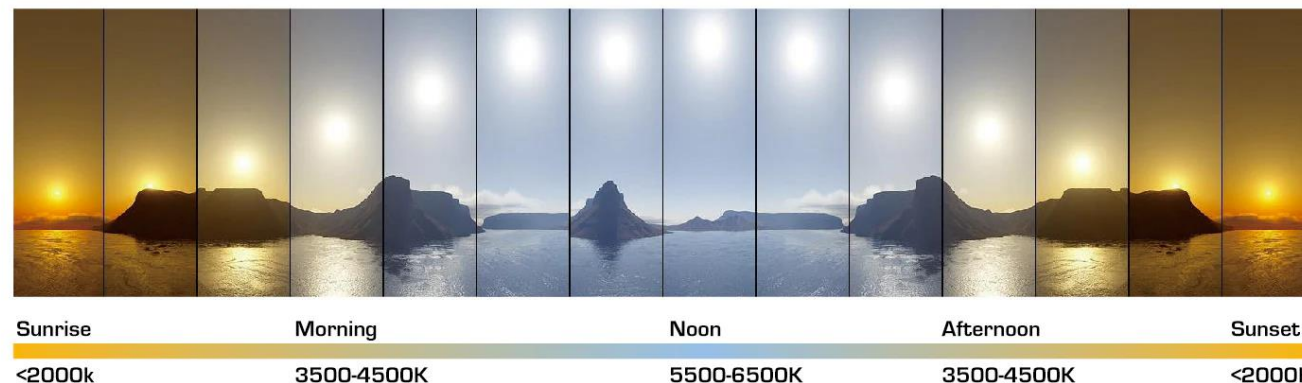
Midday



Evening



Color Temperature Chart



Part 4: Confirmation from the FBI?

Given the high likelihood that the parked Elantra was the patsy’s car, let’s take another look at the Jon Malis video in terms of timing as well as some testimony from FBI Deputy Director Paul Abbate during the July 30, 2024 Senate hearing. He was asked a question by Sen. Butler, coincidentally. Keep in mind that the FBI is still withholding the location of the Patsy’s car, but did Abbate give us a clue?

(01:35:40) “We have video that was recently found of **the shooter walking in a distance from his car** just before 6:00 PM, about 5:56, I believe. And based on everything we have, we assessed that he returned to his vehicle at that time, **got the backpack**, and then proceeded back to the area, into the AGR building. And then he’s observed, of course, on the roof just minutes later holding the backpack in front of him. In fact, there’s dashcam footage from a police vehicle that shows him briefly traversing the roof with the backpack in front of him.” Deputy Director Abbate ([7/30/2024 Senate Hearing](#))

“Walking in a distance from his car.” How are we to take that, a long distance or a short distance? Why even add that statement if he was just seen walking onto the AGR property and the car was not at least nearby? The FBI knew where it was parked.

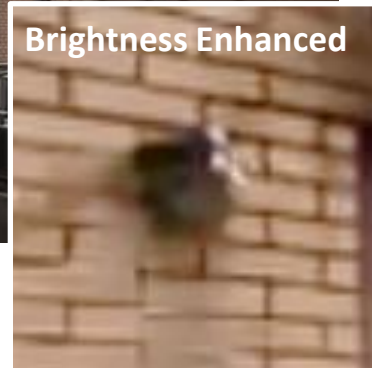
Abbate’s video time was 5:56 pm, and the patsy had his backpack, so it could not be Jon Malis’ video he was referring to, since Malis’ video timestamp was 5:04 pm (accounting for incorrectly setting his dashcam’s clock 12 hours off.)

Let’s try to find where that video was taken from using Google Maps Street View. Lt. Pearson’s second bodycam video gives us a starting point, but we need to be aware that 3 telephone poles were installed since the Google Maps footage was taken.



Sidebar Analysis – Patsy’s Car

Where is the camera the FBI got the 5:56 pm video from?



Surveillances Camera That Captured Patsy Climbing Onto Roof

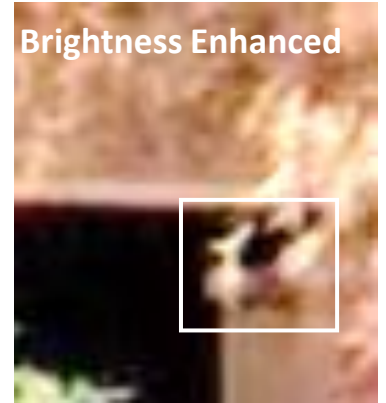
What we are looking for is a surveillance camera like the one that captured the patsy climbing on the roof.

From the street where the Elantra was parked, zooming in on the buildings reveals no visible surveillance cameras.

When you move into the parking lot just right, you can see what appears to be a surveillance camera near the front door. That camera is totally concealed from the street, however.

The next place to look is along the path the patsy took to get to the Door 14 picnic table where he was next sighted by Nicol.

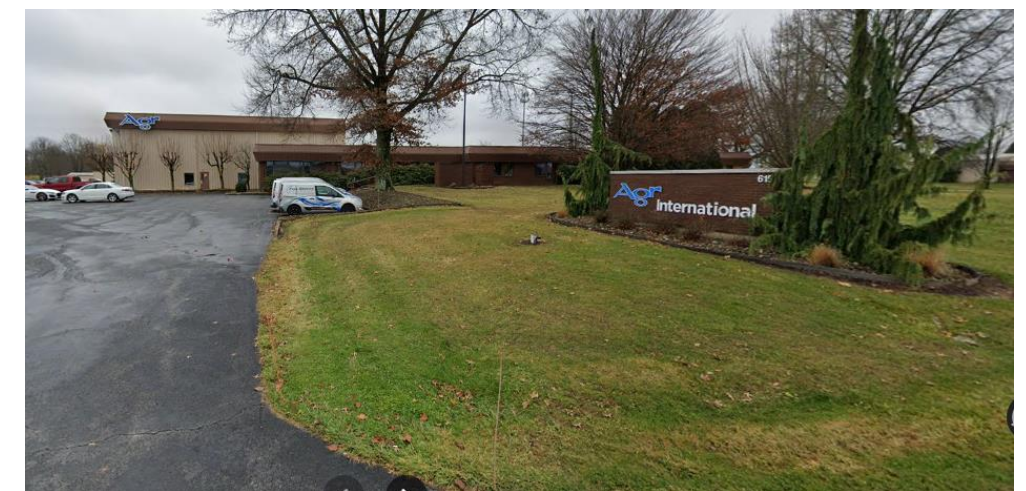
Near Front Door



Approximate Location of Hyundai Elantra



180° View From Hyundai Elantra



Where is the camera the FBI got the 5:56 pm video from?

The only surveillance camera seen along the patsy’s path from the parked Elantra and the Door 14 picnic table he was spotted near at 6:02 pm by Nicol is the same camera that captured him climbing on the roof, and it would have easily spotted him walking past the gap in buildings.

Bingo! Same Camera



Jon Malis Dashcam

(Located at 5:56 pm in article’s timeline.)



No Cameras Along These Walls



No Cameras Along This Wall

No Cameras Along This Wall



“...the shooter walking in a distance from his car...”

Now that we know where the FBI almost assuredly got their 5:56 pm sighting video from, let’s go back and read FBI Deputy Director Abbate’s statement:

(01:35:40) “We have video that was recently found of **the shooter walking in a distance from his car** just before 6:00 PM, about 5:56, I believe. And based on everything we have, we assessed that he returned to his vehicle at that time, **got the backpack**, and then proceeded back to the area, into the AGR building. And then he’s observed, of course, on the roof just minutes later holding the backpack in front of him. In fact, there’s dashcam footage from a police vehicle that shows him briefly traversing the roof with the backpack in front of him.” FBI Deputy Director Abbate ([7/30/2024 Senate Hearing](#))

The distance from his car was approximately 500 feet, which is about a 2-minute walk. Had he been parked at Sheetz, you most likely wouldn’t phrase it that way. If a surveillance camera on the front of the AGR building captured him just leaving his car, the FBI likely wouldn’t have mentioned that, since for some unknown reason they don’t want to release the make, model, year, color, or location of the patsy’s car. In fact, it’s surprising Abbate even included that statement, but thankfully he did. We now have almost certain confirmation that we’ve identified the correct car as the patsy’s.

There is just one more item that needs to be addressed, the explosives in the patsy’s trunk and the K9 dog that walked past the car without any sign of detecting explosives. If that K9 was trained for explosives, that was most likely not the patsy’s car.



5:56 pm Surveillance Camera Sighting



Part 5: The detection of explosive devices.

The FBI reported finding two explosive devices in the patsy’s car consisting of ammo boxes filled with explosive materials.



FBI Headquarters
Washington, D.C.
July 29, 2024

[LINK](#)

Investigative Updates on the Butler, Pennsylvania, Assassination Attempt

Media Call Transcript

“Regarding explosive devices, we recovered two explosive devices from the trunk of the subject's vehicle near the site of the rally, and one explosive device in the subject's room at his residence. These devices consist of ammunition boxes filled with explosive material with wires, receivers, and ignition devices connected to them.

The FBI Laboratory has determined that both IEDs recovered from the subject's vehicle did not explode adjacent to the site of the rally due to the receivers both being in the off position. Explosive experts in the FBI Lab assessed the devices from the subject's vehicle were capable of exploding. However, the magnitude of the damage associated with an explosion is unclear.”

(FBI Pittsburgh Special Agent in Charge Kevin Rojek, July 29, 2024)

Meet Adam Township K9 Kiko!

A police K-9 walked past the Hyundai Elantra, but did not appear to be concerned about the vehicle. If the patsy’s car had two explosive devices filled with explosive materials, a K9 trained to detect explosives would have responded to those materials, if that was the patsy’s car. **Well, meet K9 Kiko of Adam Township Police.**

“Congratulations to Patrolman Giallorenzo and Kiko on their first shift on patrol together. Kiko is a year and a half old German Shepherd / Belgian Malinois cross. **Kiko is trained in drug detection and patrol work.** We are excited to have our first canine officer out on patrol!”

K9 Kiko was not trained for explosives detection, and it’s doubtful he received that training later due to the fact they had to raise funds to get him and the K9 vehicle in the first place, and his vest had to be donated.

[Touch a Truck event raises funds for K9 Kiko – Butler Eagle](#)

[Facebook](#)

Received vest on June 20, 2022

K9 Kiko
Adam Twp

[Facebook](#)

First day on patrol August 2, 2021



Sidebar Analysis – Patsy’s Car

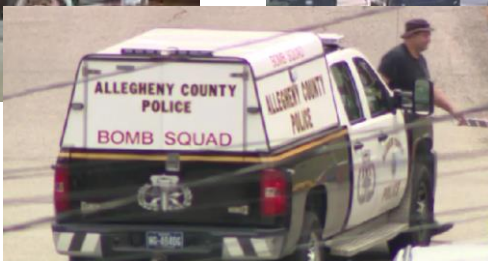
Conclusion: **Questions for the FBI and MSM.**

FBI: Why have you not released the make, model, year, color, and the location of the Patsy’s car? What could possibly make that information critical or sensitive to National Security? What are you hiding by not releasing that information?

MSM: Why did you not cover the discovery and/or inspection of Crooks’ car, which almost certainly involved the attention getting Allegheny County Police Bomb Squad, like you covered the two white vans and the inspection of Crooks’ home? There were plenty of you present to cover it. Are you helping to provide cover for the FBI?



Witness details suspected Trump gunman's 'suspicious' van



Jon Malis Dashcam

Special Note: As for you Pittsburg Post-Gazette, we now know why you placed the Jon Malis dashcam video at 5:56 pm in your timeline, despite it having a starting timestamp of 5:04 pm (corrected). But why did you post an apparent edited version cut off before Malis’ car reached the AGR entrance?

Sidebar Analysis – Patsy’s Car

Conclusion: It was almost certainly the patsy’s car.

Given the evidence and logical reasoning presented above, it is justified to infer that the Hyundai Elantra parked across the street from the AGR main entrance was almost certainly the patsy’s car. Aside from having the VIN number from the vehicle, and a copy of the patsy’s sales or lease agreement, or his proof of insurance, there is little if anything else that can be done to confirm that Hyundai Elantra was the patsy’s car. Therefore, throughout my Timeline Analyses, the inference will be made that it was the patsy’s car, unless new evidence proves otherwise. The justification for doing so includes the following:

1. The reported Hyundai Sonata was not parked in any of the AGR parking lots where the patsy was initially believed to have parked.
2. The location of the grey Hyundai Elantra aligns with the patsy’s sighting entering the AGR property, and does not conflict with any timelines regardless of when the vehicle was parked there.
3. The shooter’s vehicle shown in the FBI evidence photo is the same make, model, and color as the Hyundai Elantra.
4. The body style profile of the vehicle observed by satellite parked in the patsy’s driveway matches the parked Elantra’s, and the color very likely matches both that vehicle’s color and the evidence vehicle’s color.
5. FBI testimony regarding the video capturing “the shooter walking in a distance from his car” at 5:56 pm, gives us about as much confirmation as we can expect from the FBI, and it is well within reason to treat it as such.

Gray 2021-2023 Hyundai Elantra SE, SEL or Limited

